

# Arizona State



2003 MEDIA GUIDE

# Volleyball



[www.devilsdomain.net](http://www.devilsdomain.net)

[www.thesundevils.com](http://www.thesundevils.com)

# 2003 Sun Devil Volleyball Schedule

Day	Date	Opponent	Location	Time
Saturday	Aug. 23	Maroon and Gold	Wells Fargo Arena • Tempe, Ariz.	5 p.m.
Friday	Aug. 29	\$ Utah	Wells Fargo Arena • Tempe, Ariz.	7 p.m.
Saturday	Aug. 30	\$ Ohio	Wells Fargo Arena • Tempe, Ariz.	12 p.m.
Saturday	Aug. 30	\$ San Diego	Wells Fargo Arena • Tempe, Ariz.	7 p.m.
Friday	Sept. 5	# vs. Gonzaga	Virginia Street Gym • Reno, Nev.	4:30 p.m.
Saturday	Sept. 6	# vs. Tennessee	Virginia Street Gym • Reno, Nev.	10 a.m.
Saturday	Sept. 6	# at Nevada	Virginia Street Gym • Reno, Nev.	7 p.m.
Friday	Sept. 12	% vs. Chattanooga	Moody Coliseum • Dallas, Texas	4:30 p.m.
Saturday	Sept. 13	% vs. Stephen F. Austin	Moody Coliseum • Dallas, Texas	10 a.m.
Saturday	Sept. 13	% at SMU	Moody Coliseum • Dallas, Texas	7 p.m.
Thursday	Sept. 18	* at Washington	Bank of America Arena • Seattle, Wash.	7 p.m.
Friday	Sept. 19	* at Washington State	Bohler Gym • Pullman, Wash.	7 p.m.
Friday	Sept. 26	* Arizona (AZ-TV)	Wells Fargo Arena • Tempe, Ariz.	7 p.m.
Thursday	Oct. 2	* Stanford	Wells Fargo Arena • Tempe, Ariz.	7 p.m.
Friday	Oct. 3	* California	Wells Fargo Arena • Tempe, Ariz.	7 p.m.
Friday	Oct. 10	* at USC	Lyon Center • Los Angeles, Calif.	7 p.m.
Saturday	Oct. 11	* at UCLA	Pauley Pavilion • Los Angeles, Calif.	7 p.m.
Friday	Oct. 17	* Oregon	Wells Fargo Arena • Tempe, Ariz.	7 p.m.
Saturday	Oct. 18	* Oregon State	Wells Fargo Arena • Tempe, Ariz.	7 p.m.
Saturday	Oct. 25	* at Arizona	McKale Center • Tucson, Ariz.	7 p.m.
Friday	Oct. 31	* at Stanford (Fox)	Maples Pavilion • Stanford, Calif.	7 p.m.
Saturday	Nov. 1	* at California	Haas Pavilion • Berkeley, Calif.	7 p.m.
Friday	Nov. 7	* UCLA (AZ-TV)	Wells Fargo Arena • Tempe, Ariz.	7 p.m.
Saturday	Nov. 8	* USC	Wells Fargo Arena • Tempe, Ariz.	7 p.m.
Thursday	Nov. 13	* at Oregon State	Gill Coliseum • Corvallis, Ore.	7 p.m.
Friday	Nov. 14	* at Oregon	McArthur Court • Eugene, Ore.	7 p.m.
Friday	Nov. 21	* Washington State	Wells Fargo Arena • Tempe, Ariz.	5 p.m.
Saturday	Nov. 22	* Washington	Wells Fargo Arena • Tempe, Ariz.	7 p.m.
Thurs.-Sat.	Dec. 4-6	NCAA First/Second Round	On-Campus Sites	TBA
Thurs.-Sat.	Dec. 11-13	NCAA Regionals	On-Campus Sites	TBA
Thurs.-Sat.	Dec. 18-20	NCAA Final Four	Dallas, Texas	TBA

## TOURNAMENT PARTICIPANTS

\$ Sun Devil Volleyball Classic -- Arizona State, Utah, Ohio, San Diego

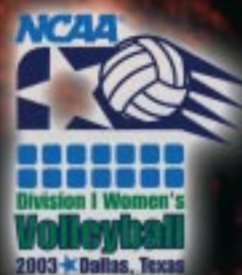
# Nevada Tournament; Reno, Nevada -- Nevada, Arizona State, Tennessee, Gonzaga

% SMU Radisson Invitational; Dallas, Texas -- SMU, Stephen F. Austin, Chattanooga, ASU

\*Pac-10 Conference Match

(Fox) Pac-10 Volleyball Game of the Week

All times local at site  
Home matches in bold



## Media Guide Credits

Layout and Copy: Jeff Evans (ASU Media Relations) and BFP

Design and Printing: Ben Franklin Press, Tempe (Gus Mariscal and Brad Woodward)

Photography: Scott Troyanos; Scottsdale; Jason Wise, Tempe; Chuck Conley, Tempe; Mike Scully, Thanks to all photographers who contributed to this media guide.

On The Back Cover: ASU's senior class of Cheryl Anglin, Courtney Blocher, Jodi Proctor, Mandy Stephens, Kim Mehlhorn, Juliana Escobar.

A Special Thanks To All who helped with this guide and the content within.





# Table of Contents/Quick Facts

Schedule.....	IFC
Devil Data .....	1
<b>Sun Devil Volleyball</b>	
Life in the Valley .....	2-3
Arizona State University .....	4
Athletic Facilities .....	5-6
Academics.....	7
2003 Outlook .....	8-9
Roster .....	9
<b>Coaching Staff</b>	
Head Coach Brad Saindon .....	10-11
Asst. Coach Terri Cox .....	12
Asst. Coach Jami Coughlin.....	12

## Meet the Sun Devils

Cheryl Anglin.....	13
Courtney Blocher .....	14
Juliana Escobar .....	15
Natalie Harris .....	16
Kim Mehlhorn .....	17
Jodi Proctor .....	18
Mandy Stephens .....	19
Sarah Watkins .....	20
Burnley/Hirzel/Kohner .....	21
Melo/Morton/Wilson .....	22

## ASU Results/Statistics/Records

2002 Results.....	23
2002 Statistics.....	24
Program History .....	25
Year-by-Year Results .....	26
Yearly Statistical Leaders .....	27
Individual Match Leaders .....	28
Career Records/Single-Season Records .....	29
Post-Season History .....	30
Sun Devil Legends .....	31
Honor Roll.....	32
2003 Opponents .....	33-35
Michael Crow/Gene Smith.....	36

## 2003 Sun Devil Data

### University Information

**Location:** Tempe, Arizona 85287-2505  
**Founded:** 1885  
**Enrollment:** 45,693  
**Conference:** Pacific-10  
**Nickname:** Sun Devils  
**Colors:** Maroon and Gold  
**President:** Michael Crow  
**Director of Athletics:** Gene Smith  
**Senior Associate AD (SWA):** Sandy Hatfield-Clubb  
**Faculty Representative:** Dr. Jerry Kingston

### Volleyball Information

**Head Coach:** Brad Saindon  
 (first year, Arizona State, '76)  
**ASU Record:** 0-0 (1st year)  
**Career Record:** 244-140 (12 years)  
**Career Pac-10 Record:** 0-0

**Saindon's Office Number:** (480) 965-2035

**Saindon's email:** Brad.Saindon@asu.edu

**Assistant Coach:** Terri Cox  
 (2nd year, Arizona State, '98)

**Office Number:** (480) 965-7178

**Assistant Coach:** Jami Coughlin  
 (1st year, Arizona State, '02)

**Office Number:** (480) 965-0639

**Letterwinners Returning/Lost:** 8/5

**Starters Returning/Lost:** 6/2

**2002 Record:** 15-12 (8-10 Pac-10, 7th)

**Facility:** Wells Fargo Arena (14,141)

**Administrative Assistant:** Cary Dedrick

**Athletic Trainer:** Carree McCarty

**Manager:** Shannon Rounds

**Strength Coach:** Mark Uyeyama

**Marketing:** Christine Salazar

**Volleyball Operations:** Eric Hodgson (3rd year)

### Sun Devil Media Relations

**Mailing Address:** ICA Building, Room 105  
 Tempe, AZ 85287-2505

**Asst. AD/Media Relations:** Mark Brand

**Assoc. Sports Info. Dir:** Doug Tammaro

**Assoc. Sports Info. Dir:** Rhonda Lundin

**Assistant Sports Information Directors:**

Jeff Evans, Will Phillips, Alex Ryan

**Volleyball Contact:** Jeff Evans

**Evans at Home:** (602) 502-9053

**Evans Direct Line:** (480) 965-6594

**Evans' E-Mail:** Jeff.Evans@asu.edu

**Sports Information Phone:** (480) 965-6592

**Sports Information Fax:** (480) 965-5408

**Press Row Phone:** (480) 965-7274

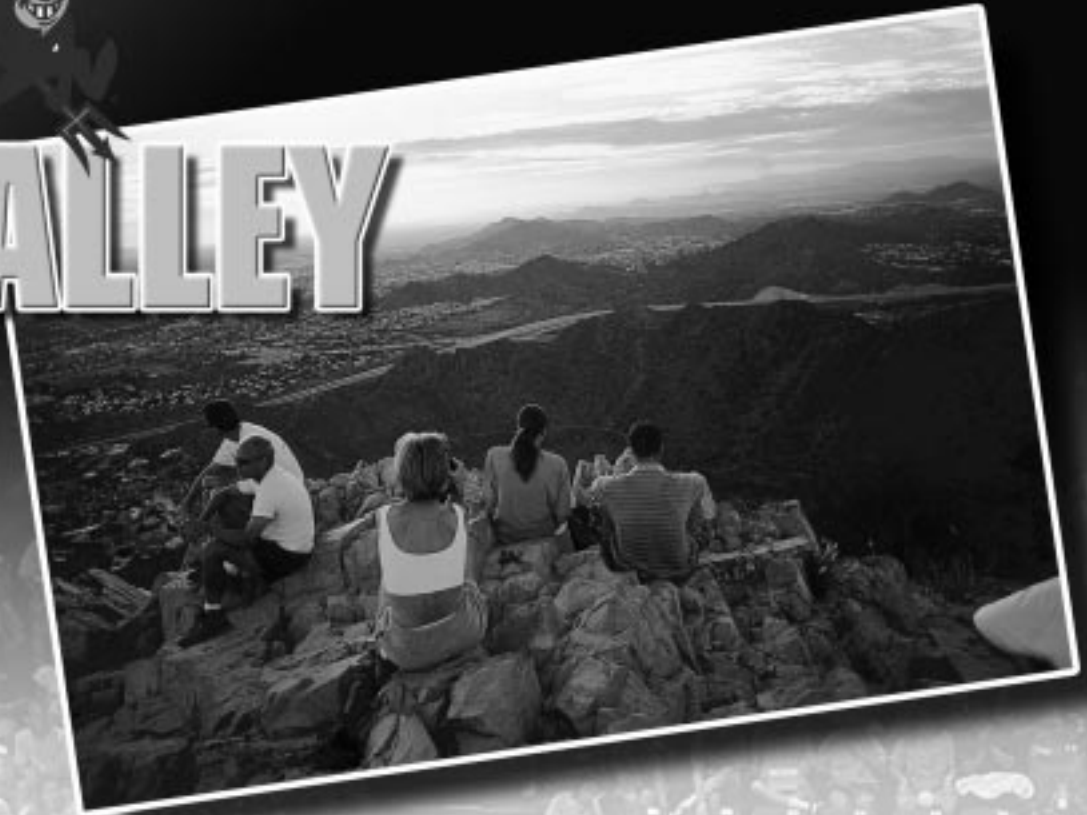
**Internet Address:** www.TheSunDevils.com



2003 Arizona State Volleyball:  
 Front Row (L-R) Terri Cox (Assistant Coach), Stephanie Kohner, Cheryl Anglin, Kim Mehlhorn, Courtney Blocher, Nicole Morton, Sarah Watkins, Giovana Melo, Brad Saindon (Head Coach).  
 Back Row (L-R) Jami Coughlin (Assistant Coach), Tierra Burnley, Lindsey Hirzel, Jodi Proctor, Mandy Stephens, Katie Wilson, Juliana Escobar, Natalie Harris, Shannon Rounds (Manager)

# LIFE IN THE VALLEY

With its spectacular desert landscaping and colorful sunsets, the Valley of the Sun is home to 2.3 million people and is the vacation destination for 10 million people annually.



The *Sporting News* named Phoenix the fourth-best sports city in the United States in 2000.



Concerts and block parties are just part of the bustling nightlife of Mill Avenue, a restaurant district that is the center of activity in downtown Tempe.







**The Phoenix metropolitan area boasts over 325 days of sunshine each year with an average temperature of a balmy 85 degrees.**



**ASU's own Sun Devil Stadium, located on the banks of Tempe Town Lake, is home to the Tostitos Fiesta Bowl and has played host to four national championship games and one Super Bowl.**



**The Phoenix sports scene includes the Suns of the NBA, the Mercury of the WNBA, the Coyotes of the NHL, the Cardinals of the NFL, the Rattlers of the Arena Football League and the 2001 World Champion Arizona Diamondbacks of MLB in addition to the hometown Arizona State Sun Devils.**

**T**he Arizona State Department of Intercollegiate Athletics recently moved back into the newly renovated Nadine and Ed Carson Student-Athlete Center. The 165,000-square foot facility houses the entire athletic department and gives ASU one of the finest student-athlete centers in the country. A Sun Devil student-athlete can accomplish everything she needs to do in a given day from meeting with an academic adviser to taping and treatment to getting ready for practice without leaving the building.



**Nadine & Ed Carson Student-Athlete Center**



**APS Learning Center**



**Nap & Barbara Lawrence Weight & Strength Center**







**Lattie & Elva Coor Student-Athlete Study Lounge**

**Wally Kelly Student-Athlete Lounge**

**Nathan & Betty Norris Quiet Study**

**Training Room**

**Hobbs Family Stadium Club**

**Volleyball Locker Room**

**Tom & Gloria Dutson Theater**

# ARIZONA STATE UNIVERSITY



The Arizona State main campus is located on 722 acres in the heart of downtown Tempe and just minutes from the busy nightlife of Mill Avenue. With its shady malls, cool fountains, lush plantings, Arizona State's campus has long been known as an "oasis in the desert."



ASU's Main Campus offers more than 100 majors through eight colleges, 104 bachelor's degree programs, 94 master's degrees, a highly regarded law degree and nearly 50 doctoral degrees.





# ACADEMIC

# HIGHLIGHTS AT ASU



Kielii Lilavois  
Academic Counselor

For the sixth time in seven years, ASU has a student on *USA Today's* list of the nation's top 20 undergraduates. (NO OTHER public university in the country has had as many students with the award.)

The university's Honors College is at its largest enrollment (1,689), making it the most sought-after honors college in the country. The Honors College ranks in the top eight in the United States with a 100 percent acceptance rate to medical and law schools.

ASU currently ranks sixth among public universities in the U.S. in its enrollment of freshmen merit scholars. (In 1992, two merit scholars enrolled at ASU; in the past three years, 365 have enrolled.)

Eight ASU students have earned prestigious *USA Today* Academic First-Team honors, the best record of ANY public university in the nation. Of all institutions, public and private, only Harvard and Yale have more.

*US News* ranks ASU's Freshman Year Experience program as one of nation's best!

ASU ranks in the top 20 in the United States since 1991 for Goldwater Scholars (math, science and engineering), and the top 10 for Marshall (academics and leadership), Truman (careers in public service), and Udall (environment) award winners.

ASU is a Doctoral/Research-Extensive I Institution, the highest distinction per the prestigious Carnegie Foundation classification system.

ASU Main Campus offers more than 100 majors through eight colleges, 104 bachelor's degree programs, 94 master's degrees, a highly regarded law degree and nearly 50 doctoral degrees.

Football freshmen and team GPAs have been at all-time highs in the past two years, while 40 percent of ASU's student-athlete population had a cumulative GPA of 3.0 or above, and 60 percent of the student-athlete population were Maroon and Gold Scholars this past year (had a 3.0 cumulative or fall or spring 3.0 GPA)

Arizona State University is one of this year's "12 Hottest and Trendiest Colleges" in the 2003 "How to Get into College" guide published by Kaplan and *Newsweek*.

**Academic Programs ranked in the top 25 nationally - Past 3 years**

**Architecture - Architecture, Interior Design**

**WP Carey School of Business - Undergraduate studies, The Supply Chain Management/Logistics, Accountancy, Information Management, Computer Information Systems, General Management, Management Information Systems, Business: Productions/Operations**

**College of Education - Top 20 Graduate Programs in Educational Psychology, Education Policy, Curriculum & Instruction, Higher Education Administration: This is significant as over 100 faculty members in the college of education are responsible for administering both the Undergraduate and graduate programs. (criteria used to rank included administration of teacher preparation program for undergrads)**

**Engineering and Applied Sciences - Bioengineering / Biomedical Engineering, Computer Engineering, Industrial / Manufacturing**

**College of Fine Arts - Dance, Master of Fine Arts, Printmaking, Ceramics, Theatre for Youth, Art Education, School of Music, Playwriting, Photography**

**College of Liberal Arts - Chemistry, Exercise Science, Geology, Religious Studies, Speech and Hearing Sciences, and Zoology**

**College of Public Programs - Radio / Television Studies**

# 2003 Volleyball Outlook

**F**or the first time in 14 years the Arizona State Volleyball program has a change at the guard with new head coach Brad Saindon.

After head coach Patti Snyder-Park retired following her 14th and final season in 2002, the Sun Devils hired Saindon to take over the program. Saindon brings a wealth of college and international coaching experience to Tempe, having led the University of Colorado into national prominence and coaching at the highest national level with USA Volleyball and Team Australia.

Saindon promises to bring an exciting brand of volleyball into the Pac-10 in 2003, adding what he calls a touch of men's volleyball into the women's game.

"The brand of volleyball I bring to this program is unique and something that will be an experiment," said Saindon. "It is a quick brand of volleyball that is exciting to watch and is really fast."

Saindon's unique techniques include all players using a jump serve, swing blocking at the net and a quick brand of volleyball that will feature a team flying all over the court.

"I think we're going to be one of the fastest teams in the Pac-10 if not the nation," added Saindon. "We may not be taller or more athletic, but we are going to try to beat that with speed and technique. Speed can be the antidote for size."

While Saindon admits the change of style will create a sharp learning curve for a rather veteran team, he is satisfied with what he has seen so far.

"We had a good spring together and really got a lot done in terms of teaching the game all over," said Saindon. "It won't be an overnight process, but the progress is already noticeable."

Saindon knows that the veteran laden team may take some time to buy into the new techniques and new system. The Sun Devils return eight total players and six starters from the 2002 squad that finished the season 15-12 overall and advanced to the NCAA Tournament for the third time in the last four years.

"Like every team, we go into the season with goals of making the NCAA tournament," said Saindon. "It is going to be a challenging season for us with a tough schedule and new system, but I think this team has the talent to reach those goals."

A group of six seniors leads the 2003 squad that hopes to improve upon its seventh place pick in the preseason Pac-10 poll. ASU also finished seventh in a highly competitive Pac-10 last year while posting an 8-10 record in league play. Earning a national ranking for the first time since 1995, the Sun Devils were one of a record eight Pac-10 schools that advanced to post-season play. ASU defeated Cincinnati in a five-game match in the first round of the NCAA Tournament and lost to Nebraska in the second round.

"The Pac-10 is without doubt one of the toughest volleyball conferences in the nation," said Saindon. "Every weekend will offer extremely challenging matchups and will push our players and our new system to the max."

The addition of Saindon and new assistant coach Jami Coughlin also solidifies an all-Arizona State coaching staff. Saindon graduated from ASU in 1976 and returns to his alma mater with stops at almost every level of the volleyball community. Coughlin, who is one of ASU's best outside hitters in school history from 1998-2001, joins former Sun Devil All-Pac-10 standout Terri Cox to complete the coaching staff. Coughlin and Cox are ranked No. 2 and No. 3 respectively in school history in career digs and are among only 11 players in school history to record 1,000 or more digs and kills in their careers.

"It is a great feature to have a coaching staff that has a link to the past of the program," said Saindon. "You always have a lot of pride in your school, but to come back and coach at your alma mater is really something special."

While the 2002 season marked the end of the

Snyder-Park era, a veteran team remained almost entirely intact with only one full-time starter departed to graduation. The core group of setter Cheryl Anglin, outside hitters Natalie Harris, Juliana Escobar and Kim Mehlhorn, middle blockers Jodi Proctor and Mandy Stephens and libero Courtney Blocher are all veterans of the program.

"We have a good group of experienced players, but adapting to the new style will be a challenge," said Saindon. "For some of them it will be like their first day as a freshman, but it will challenge them and hopefully make them better volleyball players."

For Anglin, Blocher and Mehlhorn, an era will come to an end for three of the original four from Chandler Valley Christian High School. While Harris will remain for one more year due to redshirting with a shoulder injury, the heralded recruiting class that debuted in 2000 has given the Sun Devil faithful a number of memorable matches during their careers.

"It is hard to believe that four years is already here as it seems like yesterday that we were just freshman," said Anglin.

While the senior class is well noted, the Sun Devils also have to look to the future and have taken a step towards success in future years with a deep incoming class. Four freshmen and two junior college transfers highlight Saindon's first recruiting class. The freshmen include middle blockers Tierra Burnley (Santa Clarita, Calif.) and Katie Wilson (Fullerton, Calif.) and outside hitters Nicole Morton (Bonsall, Calif.) and Lindsey Hirzel (Danville, Calif.). The two junior college transfers are libero/defensive specialist Stephanie Kohner (Anthem, Ariz.) from Glendale Community College and setter Giovana Melo (Ribeirao Preto, Brazil) from Western Nebraska Community College.

"I am very excited about our newcomers and am confident they can contribute right away," said Saindon. "We didn't have much time to put the first recruiting class together, but we have a good mix of talent in areas we were concerned about."

## The Outside Hitters:

The Devils have plenty of talent and athleticism at the outside hitter position. Kim Mehlhorn, Natalie Harris, Sarah Watkins and Juliana Escobar make up a deep rotation at ASU's most experienced position.

Escobar had a stellar rookie season in 2002, earning first-team All-Pac-10 honors while averaging 4.29 kills and 3.36 digs per game. She ranked in the top 10 in the Pac-10 in both categories and set several ASU records under the new rally scoring format. Her 0.51 service aces per game ranked second in the conference and her 50 aces were third most in ASU single-season history. Escobar came to ASU as a junior college transfer from Barton County CC after earning first-team AVCA All-American honors in 2001.

"Juliana is a very important part to our success this year," said Saindon. "She has all the tools to be a dominating player and showed last year that she can dominate a match. The depth at outside hitter will also allow Juliana to be better with everyone not focusing on her."

Mehlhorn (Tempe, Ariz.) had a solid sophomore season in 2001 when she averaged 3.42 kills per game and recorded 13 double-doubles, but tapered off last year due to medical limitations. Mehlhorn battled a string of severe migraine headaches that sidelined her during several matches. Still, Mehlhorn showed that she is a key to the ASU offense as she made the all-tournament teams at both the Red Raider Classic and the season-ending UNLV/Hard Rock Volleyball Classic. Saindon said they are going to try a number of things with Mehlhorn this year to try to limit the onset of the migraines.

Harris (Tempe, Ariz.) is another key cog to the ASU offense as she continues to improve from shoulder surgery during the 2001 season. The redshirt junior came on strong at the end of the 2002 season when

she averaged three of the best matches in her career in the last six matches of the season.

"Natalie (Harris) is one of the players that really stood out during spring practices and will be a big part of our team this season," said Saindon. "She appears to have put her injury behind her and is one of the strongest players on our team. We expect big things out of Natalie this year to shoulder a lot of the hitting load with Juliana (Escobar)."

The fourth outside hitter that Saindon says will surprise a lot of people is sophomore Sarah Watkins. The native of Mikawasha, Ind., played in only 10 matches as a freshman, averaging 1.09 kills and 1.52 digs per game. Her athletic frame and quickness will earn her time on the court this season.

Saindon is confident that all four players can interchange on the left and right sides, while also saying that Escobar (a left-hander) could be featured on right side.

In addition to the featured four, Saindon will also look to freshman Nicole Morton and Lindsay Hirzel for added depth. Morton, from Bonsall, Calif., has the ability to contribute right away.

## In the Middle:

The only big concern facing Saindon is the middle blocker position. Departed senior Julia Leddy left the program as the one of the most distinguished middle blockers in school history, setting the career and single-season records for hitting percentage. Senior Jodi Proctor (formerly Smith) has starting experience at the position, but an off-season knee injury has her limited during pre-season practice.

"We have some injuries going into the season that will really determine some of our early season success," said Saindon. "We have a veteran team, but we are going to have to depend a lot on our new players to contribute and take some of the pressure off the starters."

Proctor (St. Johns, Ariz.) has been ASU's leading blocker each of the past two seasons with 0.86 per game in both 2001 and 2002. She was also third on the team last year averaging 2.41 kpg and is ASU's leading



Senior outside hitter Juliana Escobar is ASU's leading returning player after averaging 4.29 kills per game in 2002.



# 2003 Volleyball Outlook

returning hitter with a .246 hitting percentage last year. She had knee surgery after last season and is doubtful to return to the lineup for the season opener.

With the injury to Proctor, redshirt senior Mandy Stephens (Napa, Calif.) will have to step up at middle blocker. In her fifth year in the program, Stephens has shown signs during her career that she can be a force on the court. ASU's tallest player at 6-3, Stephens averaged 2.51 kills per game during her sophomore season in 2001, but fell off last year with only 1.32 kpg last year.

Freshmen Tierra Burnley (Santa Clarita, Calif.) and Katie Wilson (Fullerton, Calif.) will also be asked to step up at middle blocker. Wilson and Burnley come to ASU with a plethora of high-level club experience while growing up in Southern California.

## On the Setter Position:

ASU's most experienced position may be the most important. Senior Cheryl Anglin will join with junior college All-American Giovana Melo at the setter position.

Anglin (Queen Creek, Ariz.) is second in the ASU record books with 3,560 career assists and has recorded 16 matches with 60 or more assists. She set the single-season record with 1,452 assists as a freshman and in 83 career matches has recorded three of the top six assist performances in school history. While inching closer to the school record of 5,180, Anglin will likely team with Melo for a two-setter system. Anglin averaged 9.94 assists per game last year while starting 26 of ASU's 27 matches.

"Cheryl (Anglin) is one of the team leaders and is very unselfish," said Saindon. "We are asking her to do a lot of different things and she has stepped up. She is a smart setter and will combine with Giovana to make a really good setter combination."

Melo, a junior college transfer from Western Nebraska Community College, is described by the coaching staff as a dynamic and energetic setter. With her Brazilian descent (Ribeirao Preto), Melo will also work well with fellow Brazilian Juliana Escobar. Melo was a two-time, second-team AVCA All-American at WNCC in Scottsbluff, Nebraska.

## The Libero/Defensive Specialist

New to the NCAA women's game in 2002, the libero position added a dynamic defensive player that is on the court during almost every rotation. Senior Courtney Blocher (Scottsdale, Ariz.) took on the role last year and proved to be one of the best in the Pac-10. An energetic force on the floor, Blocher was second on the team averaging 2.89 digs per game and recorded double digs in digs in 14 matches. An athletic player who was Arizona's high school player of the year as an outside hitter, Blocher is a key to ASU's trademark defense. She has played in 312 games during her career and has averaged 2.84 digs per game.

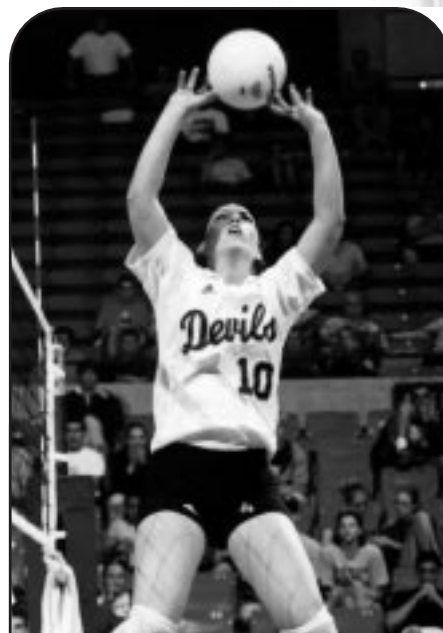
"We are a very defensive team," said Saindon. "We will be diving all over the court and be very quick."

Providing depth and support as a defensive specialist will be junior Stephanie Kohner (Anthem, Ariz.). The junior college transfer from Glendale Community College will be a solid backup to Blocher. She was coached by former Sun Devil All-American Lisa Stuck at GCC and helped lead her team to a third place finish at the junior college nationals in 2002. She averaged 5.27 digs per game last year to finish second in the Arizona junior college ranks.

## On 2003 Schedule:

Just as in any year that the Devils have competed in the Pac-10, the road to the NCAA Tournament will have to go through the toughest conference in the nation. ASU is scheduled to play 12 matches against top 25 opponents, including two each against league foes USC (No. 1), Stanford (No. 4), Arizona (No. 10), UCLA (No. 13), Washington State (No. 19) and California (No. 24). The Devils will also face several other perennial national powers, including 2002 NCAA Tournament participants Utah, Nevada and San Diego. ASU earned 13 votes in the preseason AVCA poll to rank No. 41.

The Devils will be tested right out of the gates with a tough opening tournament hosting the Sun Devil Volleyball Classic. The Devils will host San Diego, Ohio and Utah during the two-day, six-match tournament. ASU, San Diego and Utah all made the NCAA Tournament last year.



Senior setter Cheryl Anglin returns for her fourth and final season as ASU's starting setter. She is second all-time with 3,560 career assists.

"We have a tough schedule and we will find out right away where we stand and how good we are with that opening tournament. After our tough non-conference schedule, we will go right into our Pac-10 season with matches on the road at Washington and Washington State. We have our work cut out for us, but when you have a tough schedule you just have to step up to the challenge," said Saindon.

## 2003 Volleyball Roster

#	NAME	POS	HT	YR/EXP	HOMETOWN (Last SCHOOL)
1	Mandy Stephens	MB/OP	6-3	Sr./3V*	Napa, Calif. (Napa)
2	Tierra Burnley	MB	5-11	Fr./HS	Santa Clarita, Calif. (Valencia)
3	Juliana Escobar	OH	5-11	Sr./IV	Brasilia, Brazil (Barton County CC)
4	Natalie Harris	OH/OP	5-11	Jr./2V*	Tempe, Ariz. (Valley Christian)
6	Giovana Melo	S	5-9	Jr./TR	Ribeirao Preto, Brazil (Western Nebraska CC)
7	Kim Mehlhorn	OH	5-11	Sr./3V	Tempe, Ariz. (Valley Christian)
8	Courtney Blocher	OH/L	5-7	Sr./3V	Scottsdale, Ariz. (Valley Christian)
9	Stephanie Kohner	DS/L	5-7	Jr./TR	Anthem, Ariz. (Glendale CC)
10	Cheryl Anglin	S	5-9	Sr./3V	Queen Creek, Ariz. (Valley Christian)
11	Jodi Proctor	MB	6-1	Sr./3V*	St. Johns, Ariz. (St. Johns)
12	Nicole Morton	OH	5-10	Fr./HS	Bonsall, Calif. (Fallbrook Union)
14	Sarah Watkins	OH	5-11	So./IV	Mishawaka, Ind. (Mishawaka)
16	Katie Wilson	MB/OP	6-3	Fr./HS	Fullerton, Calif. (Sunny Hills)
17	Lindsey Hirzel	OH	5-11	Fr./HS	Danville, Calif. (San Ramon)

\* - has utilized redshirt year

**Head Coach:** Brad Saindon, 1st Year (Arizona State, '76)

**Assistant Coach:** Terri Cox, 2nd Year (Arizona State, '98)

**Assistant Coach:** Jami Coughlin, 1st Year (Arizona State, '02)

## Alphabetical Roster

10	Anglin, Cheryl
8	Blocher, Courtney (Blocker)
2	Burnley, Tierra
3	Escobar, Juliana
4	Harris, Natalie
17	Hirzel, Lindsey
9	Kohner, Stephanie
6	Melo, Giovana
7	Mehlhorn, Kim
12	Morton, Nicole
11	Proctor, Jodi
1	Stephens, Mandy
14	Watkins, Sarah
16	Wilson, Katie

## Class Breakdown

Senior (6)	Juniors (3)	Freshmen (4)
Anglin	Harris*	Burnley
Blocher	Melo	Hirzel
Escobar	Kohner	Morton
Mehlhorn	Sophomores (1)	Wilson
Proctor*	Watkins	
Stephens*		

\* - has utilized redshirt year

# Head Coach Brad Saindon

**B**rad Saindon begins his first year as the head volleyball coach at Arizona State University. Absent from the college coaching ranks for the past six years, Saindon has a wealth of international and college coaching experience and will look to continue the recent success of ASU advancing to the NCAA Tournament in three of the past four years.



Prior to starting at ASU, Saindon was an assistant coach with the USA Men's National Volleyball Team under head coach Doug Beal for two years. He arrived at his second stint with USA Volleyball after serving as head coach of the Australian Women's National and Olympic Volleyball Team for four years. Under Saindon's direction the Australian women's national team climbed from a world ranking of No. 40 in May 1997 to a world ranking of No. 14 after placing 9th at the 2000 Olympic Games in Sydney, Australia. Saindon also served as an assistant coach under head coach Bill Neville from 1989-1990 for USA Volleyball. His responsibilities with USA Volleyball included running and planning daily practices and overseeing the daily strength and conditioning program at the USOC training facility in Colorado Springs, Colo. He has coached in over 350 international events in 27 countries, including various world championships, world cups, Asian Championships, the Goodwill Games and many others.

Saindon's resume also includes a tremendously successful coaching career in the college ranks. He was the architect for the women's volleyball program at the University of Colorado, starting the program from scratch in April 1986. Under his direction the Lady Buffs posted a 181-112 record from 1986-97, qualified for the NCAA volleyball tournament six times (1991-1996), were Big Eight Conference Champions in 1993, were runners-up in the Big Eight Conference five times, and captured two Big Eight

Conference tournament titles (1992 and 1993).

Saindon was named Big Eight Conference Coach of the Year three times (1988, 1992, and 1993).

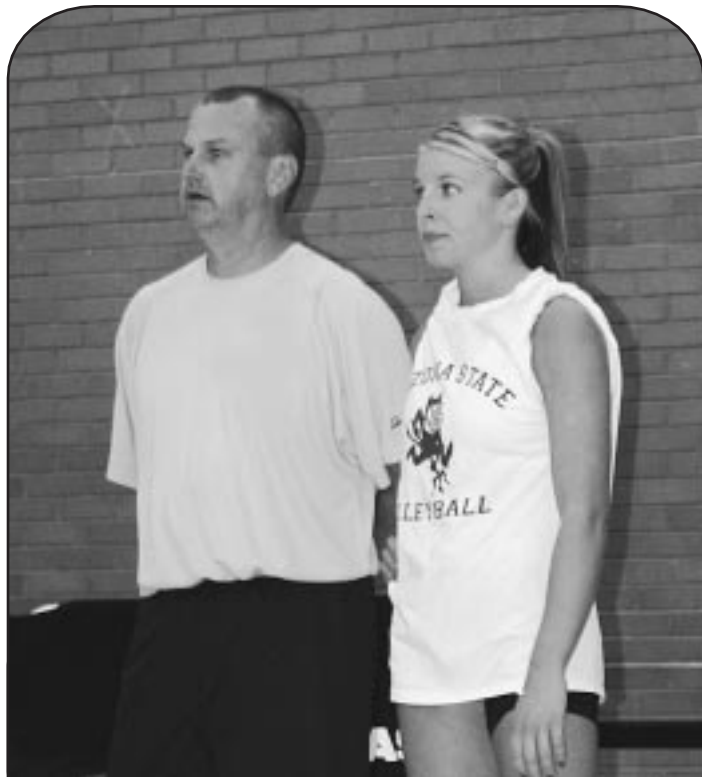
Colorado became a perennial national power under Saindon's guidance, earning a national ranking 45 times during his tenure. The 1993 squad finished with a 26-6 record, winning both the Big 8 regular season title and the conference tournament. The Buffalos advanced to the Sweet 16 and Saindon earned his third Big 8 Coach of the Year award.

Prior to his position with the University of Colorado, Saindon was the head volleyball coach at Regis College from 1984-86, posting a career 63-28 record. Previously he served as the assistant volleyball coach at the University of Oklahoma from 1980-84. A native of Colorado, Saindon graduated from Wheat Ridge High School in Wheat Ridge, Colo., in 1972. He went on to receive a bachelor's degree in business administration from Arizona State University in 1976 and a master's degree in the scientific basis of sport from the University of Oklahoma in 1984.

He also has extensive experience in the sport of volley-

ball as a player. Saindon played for the Arizona State volleyball club team from 1972-1976. He also played for elite club teams in the Rocky Mountain Region of the United States Volleyball Association (1977-1980 and 1985). He made the All Region Team each of those years and was named Most Valuable Player in the Rocky Mountain Region in 1977, 1978, 1980, and 1985. He played three years professionally in the International Volleyball Association, playing for the Denver Comets in 1978 and 1980 and the Orange County Stars in 1979.

He has coached at virtually every level of volleyball, including grassroots development clubs, junior high and high school system, elite club level, collegiate, national, and international and Olympic level. Throughout his career Saindon has been involved with USA Volleyball coaching and helping run numerous camps and clinics administered by USA Volleyball.



*First year head coach Brad Saindon talks strategy with senior libero Courtney Blocher at a preseason practice.*



# Head Coach Brad Saindon

## Brad Saindon Year-by-Year

### Regis College (63-28)

1984	40-19	
1985	23-9	Conference champions, DII NCAA qualifier

### University of Colorado (181-112)

#### Six NCAA Tournament Appearances, two Sweet 16

1986	6-18	First year of Colorado program
1987	9-20	6th place Big 8, 3rd place Big 8 tournament
1988	22-13	3rd place Big 8, 2nd place Big 8 tournament, Big 8 Coach of the Year
1989	—	Coached with USA Volleyball until Oct. 1990
1990	12-7	Colorado was 20-15. 2nd place Big 8, 2nd place Big 8 tournament
1991	25-10	2nd place Big 8, 2nd place Big 8 tournament, NCAA tournament)
1992	22-9	2nd place Big 8, Big 8 tournament champions, Big 8 Coach of the Year, NCAA tournament
1993	26-6	Big 8 champions, Big 8 tournament champions, Big 8 Coach of the Year, NCAA tournament
1994	23-8	2nd place Big 8, 2nd place Big 8 tournament, NCAA tournament
1995	17-11	2nd place Big 8, NCAA tournament
1996	19-10	4th place Big 12, NCAA tournament

### International Experience:

1997-2000: Head Coach Volleyball Team Australia

- improved world ranking from #40 to #14 during tenure
- coached in 2000 Olympic Games in Sydney, Australia

**Career Collegiate Coaching Record:** 244-140

## ASU Volleyball Support Staff



Eric Hodgson  
Volleyball Operations



Shannon Rounds  
Graduate Manager



Carree McCarty  
Trainer



Jeff Evans  
Media Relations



Mark Uyeyama  
Strength Coach



John Bieber  
Equipment Manager



Christine Salazar  
Marketing



Cary Dedrick  
Support Staff



Jody Smith  
Assistant AD -  
Compliance



Sandy Hatfield-Clubb  
Associate AD-SWA

# Assistant Coaches

**F**ormer Sun Devil volleyball standout Terri Cox begins her second year as an assistant coach at Arizona State. Cox, who played for ASU from 1994-97, came to ASU in 2002 after spending a year as the assistant coach at Texas Tech University in Lubbock, Texas.

"I am extremely excited to return to the program where I played and have the opportunity to coach a great group of players," said Cox. "You always have a special bond with the school you played for and it is a dream come true for me to be back here in a coaching capacity."

Cox, a native of Long Beach, Calif., is a 1998 graduate of ASU with a degree in English. She will serve as ASU's top assistant, heading up all recruiting duties and on-court skill development. She will join with former Sun Devil outside hitter Jami Coughlin to complete the all-ASU coaching staff. Cox will specifically work with outside hitters and defense, both areas where she excelled as a player. Prior to coaching at Texas Tech, Cox led Xavier Prep (Phoenix) to back-to-back appearances in the Class 5A Arizona High School State Championship, including winning the title in 2000.

"Terri is outgoing and personable and those attributes will help her in her relationship with both the current ASU players and future recruits," said ASU head coach Brad Saindon. "She still has the ability to get out on the court and teach by example. Terri also brings some great recruiting skills to the program as she is still networked in the high schools and club ranks in the Valley since her



**Assistant Coach  
Terri Cox**

successful stint as head coach at Xavier Prep High School, but also in Southern California (hometown) and Texas, which are recruiting hotbeds."

As a four-year starter at Arizona State (1994-97), Cox ranks in the top 10 in the ASU Volleyball record books in several categories, finishing her career with 1,185 kills (9th) and 1,382 digs (3rd). She is only one of eight players in ASU volleyball history to record 1,000 or more digs and kills in a career.

Cox was an all-Pac-10 performer in 1996 when she recorded 441 kills (10th most in ASU single-season history) and 426 digs (7th most in ASU single-season history). Under her guidance last year, Juliana Escobar earned first-team All-Pac-10 honors. Escobar set an ASU rally-scoring record with 420 kills and 50 service aces.

Cox officially started at ASU March 1, 2002. She has a five-year-old daughter (Justine Spann) and is engaged to former Sun Devil football player Creig Spann. The couple will be married in January of 2004.



**Cox was an All-Pac-10 Outside hitter for ASU from 1994-97.**

**F**ormer Arizona State volleyball student-athlete Jami Coughlin is the latest addition to the Sun Devil coaching staff. The former outside hitter for the Sun Devils (1998-2001) was hired on July 1, 2003. Coughlin joins head coach Brad Saindon (Arizona State, 1976) and Terri Cox (Arizona State, 1998) to round out a coaching staff consisting entirely of ASU graduates.

"We are very excited to have Jami as a part of our staff," said Saindon. "She is a former student-athlete who excelled in both the classroom and on the court and is a great role model for our players. No one will work harder than Jami as she embarks on her quest in the coaching world."

Coughlin was a four-year standout for the Sun Devils from 1998-2001 and is a member of the ASU 30th Anniversary team. She graduated from Arizona State in 2002 with a perfect 4.0 GPA in special education. A three-time All-Pac-10 Academic selection and two-time Academic All-American, Coughlin begins her first stint as an assistant coach.

"This is a dream job for me to coach at Arizona State and continue my love for the sport of volleyball," said Coughlin. "To be honest, two years ago after I graduated I really never thought I would be coaching, but once I left I realized how much I loved the game and that is when things started to fall in place for me. I am excited to learn and to grow as a coach."



**Assistant Coach  
Jami Coughlin**

During her four years on the court at ASU, Coughlin played in every match (108) and ranks second in ASU history with 1,528 digs and sixth with 1,360 kills. She is one of only eight Sun Devils to record 1,000 or more kills and digs in a career and ranks sixth all-time in Pac-10 volleyball history with her dig total.

During her senior season in 2001, Coughlin led the Sun Devils averaging 3.56 kills per game and 3.98 digs

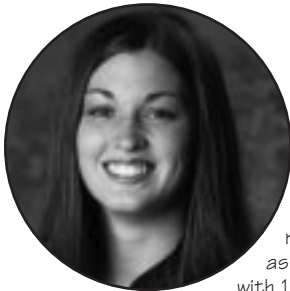
per game. She led the Pac-10 in digs in two of her four years and recorded a double-double (kills/digs) in 84 of her 108 matches (77%). Coughlin is a native of Glendale, Ariz., and graduate 1998 graduate of Moon Valley High School.



**Coughlin ranks second in ASU history with 1,528 career digs from 1998-2001.**



# Player Profiles



## Cheryl Anglin

#10

5-9 • Senior • S • Queen Creek, Ariz. (Valley Christian)

**ASU:** An unselfish team leader with excellent setting skills... a three-year starter for the Sun Devils... has played in 83 career matches and 309 games... second all-time with 3,560 career assists... set the ASU freshman and overall single-season record with 1,452 in 2000... has recorded 16 career matches with 60 or more assists.

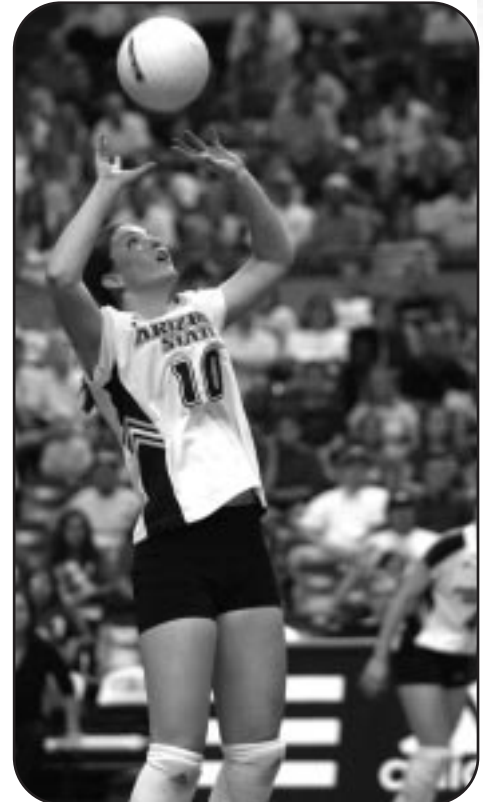
**2002 (Junior):** ASU's starting setter in 26 of the ASU's 27 matches... named to second-team All-Pac-10 Academic team... averaged 9.94 assists per game, seventh best in the Pac-10... had 10 matches with 50 or more assists, including two with 70 or more... recorded a Pac-10-best 76 assists at Oregon (10/18) to rank as the sixth-best assist performance in ASU single-match history... the 76 assists are the third most in Anglin's career and established an ASU and Pac-10 rally-scoring record... also dished out 67 assists vs. Clemson (9/14)... moved into second place in ASU career record books for assists (3,560) past former Sun Devil (1989-92) Jennifer Helfrich... had 70 assists and 19 digs in five-game win over Cincinnati (12/6) in NCAA Tournament... her 17 assists vs. Arizona (10/25) and USC (11/22) are single-match career lows during her three years at ASU.

**2001 (Sophomore):** Averaged 11.37 assists per game to rank seventh in the Pac-10... improved defense with 2.02 dpg to rank fifth on the team, including five matches with 10+ digs... picked up fifth double-double (assists/digs) of the year and 19th of her career with 45 assists and 12 digs vs. Arizona (11/3)... season-high 68 assists vs. California (11/17)... added 60 assists in win over Washington (11/10), her 13th career match with 60+ assists... had 60 assists in season opener vs. Nevada (8/31)... had nine matches with 50+ assists... had season and career-high six kills vs. Oregon (9/21)... co-authored a column on ASU's website titled Coughlin's Corner and Anglin's Angle.

**2000 (Freshman):** Set the school record for assists in a season with 1,452, breaking the old record of 1,450 set in 1985 by Regina Stahl... shattered the freshman school record by 390 assists, set also by Stahl in 1984... her 84 assists vs. Washington State (10/20) is the second best single-match performance in school history... her 77 assists in her first collegiate start vs. Cal Poly (9/1) ranks fifth in ASU history... finished third in the Pac-10 with 13.08 assists per game... named to the Pac-10 all-freshman team... recorded eight matches with over 60 assists, including a string of five straight in the middle of the season... had 63 assists in a four-game win over Duke in the NCAA first round... season high 23 digs vs. Southwest Texas (9/9).

**High School:** One of the fabulous four out of Valley Christian that all signed letters of intent with ASU... coached by her aunt, Deanna Anglin, who attended Arizona State... was a four-year letter-winner for Valley Christian and was widely considered as the state's best setter... three-time all-Metro selection... 917 career assists... was a scholar athlete throughout her prep career... helped lead Valley Christian to four consecutive state championships... named to the Arizona Republic All-Arizona team three consecutive years... member of the East Valley Juniors club team coached by former ASU assistant coach Scott Swanson, who is currently the head coach at UTEP... captain in 1997-98... considers her most exciting experience in sports when she was named an All-American at the 16's Open Nationals... also lettered one year in track.

**Personal:** Pursuing a nursing degree at ASU... got a perfect 4.0 GPA during the 2001-2002 academic year... parents are Arnold and Fatti Anglin... has one brother Hudson and two sisters, Christine (28) and Myra (23)... enjoys singing... loves spending time with family... has set a personal goal to break the career assist record at ASU... sang the national anthem on senior night against Oregon in 2001... born March 3, 1982 in Mesa, Ariz.... full name is Cheryl Lynn Anglin.



### Anglin's Top Assist Performances

84	WSU (10/20/00)
77	Cal Poly (9/01/00)
76	at Oregon (10/18/02)
71	at WSU (9/23/00)
70	Cincinnati (12/6/02)
68	California (11/17/01)
67	Washington (10/21/00)
67	Clemson (9/14/02)
65	USC (10/12/00)
63	at Southwest Texas (9/9/00)
63	vs. Duke (12/01/00)
61	Washington (10/12/01)
61	at Oregon State (10/7/00)
60	Nevada (8/31/01)
60	at Washington (11/10/01)
60	UCLA (10/13/00)

### CHERYL ANGLIN'S CAREER STATISTICS

YEAR	G	K	E	TA	Pct	Avg	Ast (Avg.)	SA	BS	BA	TB	Dig	Avg
2000	111	32	21	121	.091	0.29	1,452 (13.08)	17	5	23	28	275	2.48
2001	98	37	17	95	.211	0.38	1,114 (11.37)	11	4	23	27	198	2.02
2002	100	30	17	113	.115	0.30	994 (9.94)	7	2	11	13	187	1.87
Career	309	99	55	329	.134	0.32	3,560 (11.52)	35	11	57	68	660	2.14

# Player Profiles

#8

## Courtney Blocher

5-7 • Senior • L/OH • Scottsdale, Ariz. (Valley Christian)



**ASU:** Great athlete who plays bigger than her size... came to ASU as an outside hitter, but made the transition to defensive specialist and libero... competitive on the court at all times... although a defensive specialist, is one of ASU's hardest hitters... demonstrates a deadly jump serve... will start at libero this year for the Sun Devils... enters her senior season with 46 career matches with 10

or more digs and seven matches with 20 or more digs... is only 114 digs away from becoming only the 13th Sun Devil to record 1,000 or more digs in a career.

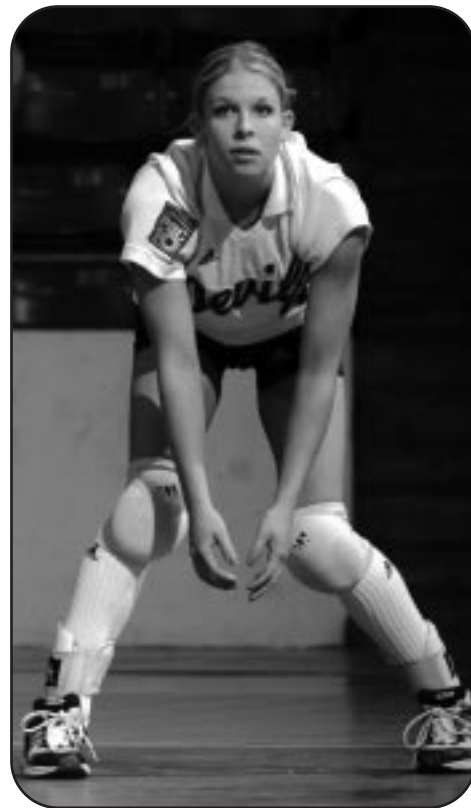
**2002 (Junior):** Was ASU's starting libero in 2002 and made one start at outside hitter, (Cal; 10/11)... named honorable mention All-Fac-10 Academic... recorded 10 or more digs in 14 matches, including three matches with 20 or more digs... averaged 2.89 digs per game... had career-high four service aces (her first four of 2002) in four-game win over Oregon (11/16)... recorded her seventh career 20+ dig match with season-high 24 at Oregon (10/18)... also had 23 digs in five-game win at Washington (10/3)... recorded 20 digs vs. then No. 11 UCLA (9/21)... had 16 digs in five-game win over No. 13 Pacific (9/7).

**2001 (Sophomore):** Started all 26 matches in 2001 and is one of four Sun Devils to not miss a game... tallied double-digits in digs in 14 matches, including nine of ASU's last 14 matches... set a career high with 26 digs vs. Arizona (11/3)... recorded four matches with 20+ digs and two double-doubles... had 11 kills and 16 digs vs. Washington (11/10)... first double-double (kills/digs) came with career high 13 kills and 20 digs vs. NAU (10/23)... recorded 21 digs vs. Washington (10/12)... had six kills vs. New Mexico (9/7) and added five vs. Washington State (10/13)... averaged 3.09 digs per game, second-best on team and ranked fifth in the Pac-10... her 3.27 dpg average in Pac-10 matches ranks fifth in the conference... had 22 service aces to rank third on the team.

**2000 (Freshman):** Played in all 30 matches and missed only three games... finished second on the team with 0.24 service aces per game... averaged 2.58 digs per game, fourth best on the team... recorded 16 matches of double-digit digs, including both matches in the NCAA Tournament... season high was 17 vs. #19 Stanford (10/27)... had three service aces in her first college match vs. San Jose State (9/1)... also had three service aces vs. Washington (10/21)... totaled eight matches with more than one ace.

**High School:** Had an illustrious prep career that was capped by being named the Gatorade State Player of the Year in 1999... coached by Deanna Anglin... attended Coronado High School in Scottsdale her freshman and sophomore years... played on the varsity squad both years at Coronado and was a member of the East Sky Region championship team... named to the 4A second team her sophomore year and team MVP... transferred to Valley Christian High School in 1998 where she helped lead the school to consecutive 2A State Championships... was a named to several all tournament teams while playing for East Valley Volleyball Club... club team placed second at the National Junior Olympics... Arizona Republic and Tribune all-region Player of the Year in 1999... Arizona Republic (1A-3A) State Player of the Year... honorable mention 1999 High School All-American.

**Personal:** Pursuing a degree in Elementary Education... parents are Jon and Jan Blocher... mother played golf for ASU... one brother Josh, who pitched at Grand Canyon... nickname is "corn-dog"... born Dec. 10, 1981 in Phoenix... full name is Courtney Lynn Blocher... classified as the team comedian... also helps coach Club Red Volleyball in Mesa in the offseason.



### Blocher's Top Performances

Digs	
26	Arizona (11/20/01)
24	at Oregon (10/18/02)
23	at Washington (10/3/02)
21	Washington (10/12/01)
20	UCLA (9/21/02)
20	Washington State (10/13/01)
20	Northern Arizona (10/23/01)

### COURTNEY BLOCHER'S CAREER STATISTICS

YEAR	G	K	E	TA	Pct	Avg	Ast	SA	BS	BA	TB	Dig	Avg
2000	113	7	15	62	-.129	0.06	16	27	0	0	0	291	2.58
2001	98	68	60	285	.028	0.69	27	22	2	7	9	303	3.09
2002	101	8	9	45	-.022	0.08	25	8	0	0	0	292	2.89
Career	312	83	84	392	-.003	0.27	68	57	2	7	9	886	2.84



# Player Profiles



## Juliana Escobar

#3

5-11 • Senior • OH • Sobradinho DF, Brazil (Barton County CC)

**ASU:** Returns for her second year at Arizona State after a successful first season in 2002... named first-team All-Pac-10 last year after averaging 4.29 kills per game... All-American candidate... will start at outside hitter... a left-handed swinger with great leaping ability... a sparkplug on the court... possesses a lethal jump serve that resulted in 50 aces last year.

**2002 (Junior):** Was ASU's starting outside hitter in 26 of 27 matches... became ASU's 11th player to earn All-Pac-10 First Team honors... led the team averaging 4.29 kills per game and 3.36 digs per game... recorded 16 double-doubles, with 21 matches with 10 or more kills and 11 matches with 20 or more kills... also had 17 matches with 10 or more digs and three with 20 or more digs... ranked fifth in the Pac-10 in kills per game (4.29), second in service aces (0.51 per game) and seventh in digs (3.36 per game)... her 420 kills rank 13th all-time in ASU history and the most during the rally-scoring era... here 50 service aces are tied for third most in single-season history... missed one match against No. 1 USC (11/22) due to an injured knee... averaged 4.21 kpg and 3.51 dpg in Pac-10 play... had solid weekend at Oregon and Oregon State (10/18-19), averaging 4.67 kpg and 4.89 dpg in two matches... recorded ASU rally-scoring records with 27 kills, 26 digs and 32.5 points in win over Oregon (10/18)... hit .378 with 23 kills and 26 digs in NCAA Tournament first-round victory over Cincinnati (12/6)... became ASU's 14th player to ever earn Pac-10 Player of the Week (9/30) by recording 20 kills and 16 digs vs. Arizona (9/27)... had 23 kills and 13 digs in win over #11 UCLA (9/21)... had 21 kills and 18 digs in her first match as a Sun Devil (South Carolina; 9/6)... tallied 25 kills vs. No. 13 Pacific in her second match as a Sun Devil... had 15 service aces in three matches at Carolina Classic, including six vs. Creighton (9/7)... the six aces are tied for the seventh most in ASU single-match history... named to the all-tournament team at the Carolina Classic and Texas Tech Red Raider Classic.

**Barton County CC (2000-2001): As a Freshman (2000)** Escobar turned in one of the best seasons in Barton County history, setting four single-season school records during the Cougars' 49-6 season... named first-team AVCA Junior College All-American... also named MVP and Freshman of the Year in the Kansas Jayhawk Community College Conference Western Division... Escobar recorded 926 kills during the season, smashing the old record of 570... she also set the record for kills per game at 6.52 and digs in a season with 370 (2.61 dpg)... to top things off, Escobar also set the single season mark for aces with 165. **As a Sophomore (2001)** she was selected as the AVCA and NJCAA 2001 Player of the Year... named Top Gun, top point scorer and top defensive player of the 2001 NJCAA Volleyball Tournament... first team AVCA and NJCAA All-American... Jayhawk West Region Player of the Year... helped lead Barton County to a 33-8 record and an eighth place finish at the NJCAA Tournament... tallied 549 kills (5.66 kpg), 328 digs (3.38 dpg), 22 blocks (0.23 bpg), 101 service aces and maintained a .300 hitting percentage.

**High School/Club:** Escobar was the MVP of the Junior National Tournament in Brazil in 2000. She was named the "Best Hitter" three times for her club team of Jogos Abertos de Sobradinho DF, which won its league title three straight years from 1998-2000.

**Personal:** Majoring in communication... father Manuel da Silveira Escobar, mother is Maria das Neves Ribeiro... father was a sergeant in the Brazilian military... has four brothers (Valdemir, Almir, Marcelo, Alex) four sisters (Ana Cristina, Elisete, Leda and Patricia)... hobbies include sleeping and eating... favorite kind of food is fish, rice, beans and deserts... likes to watch movies... favorite movie is Pretty Women.



### Escobar's Top Performances

Kills	
27	Oregon (10/18/02)
25	Pacific (9/7/02)
24	Washington (11/2/02)
23	UCLA (9/21/02)
23	Oregon (11/16/02)
23	Cincinnati (12/6/02)

Digs	
26	Oregon (10/18/02)
26	Cincinnati (12/6/02)

### JULIANA ESCOBAR'S CAREER STATISTICS

YEAR	G	K	E	TA	Pct	Avg	Ast	SA	BS	BA	TB	Dig	Avg
2002	98	420	224	1128	.174	4.29	23	50	14	22	36	329	3.36
Career	98	420	224	1128	.174	4.29	23	50	14	22	36	329	3.36

# Player Profiles

#4

## Natalie Harris

5-11 • RS-Junior • OH • Tempe, Ariz. (Valley Christian)



**ASU:** Expected to be a key component to ASU's offense at outside hitter... has shown with consistency she can be an offensive force... battled back from shoulder surgery that cut her 2001 season short... will play as a redshirt junior in 2003... described as head coach Brad Saindon one of the players that has adopted to the new system the best... has played in 51 career matches and 135 games...

averaging 1.64 kpg and 1.94 dpg over her career.

**2002 (RS-Sophomore):** During her redshirt sophomore year in 2002 saw action in 23 of ASU's 27 matches, including 11 starts at outside hitter and opposite hitter... named honorable mention All-Pac-10 Academic... named to all-tournament team at UNLV/Hard Rock Thanksgiving Classic while averaging 3.67 kpg in the two matches... fifth on the team with 2.13 kpg and fourth with 2.18 dpg... recorded career-best match vs. UCLA (11/21) when she had 22 kills, 17 digs, five blocks and 25.5 total points... all four were career highs... had 16 kills and eight digs in NCAA Tournament first-round victory over Cincinnati (12/6)... recorded a then season-high nine kills in victory over Creighton (9/7) and also had nine in loss to Washington State (10/4)... notched 10+ dig matches vs. Arizona (9/27) and Washington (10/3).

**2001 (Sophomore):** Played in 11 games due to shoulder injury, averaging 1.18 kills per game... had 10 digs vs. Nevada in first match of 2001... underwent shoulder surgery on Nov. 2 on her right shoulder... used medical redshirt season after playing in only 11 games.

**2000 (Freshman):** Played in 24 matches and made four starts... before the NCAA Tournament made only two starts, but stepped into the starting role at opposite hitter and played well... set a career and season high with 12 kills vs. Duke in the first round of the NCAA Tournament... also had 14 digs in that match... averaged 1.14 kills per game and 1.79 digs... season high of 15 digs vs. Oral Roberts (9/16).

**High School:** Had an illustrious career at Valley Christian... coached by Deanna Anglin... named State 1A-3A Player of the Year during her sophomore campaign in 1997... also named to the Volleyball Super Dozen by the Arizona Republic in 1997... During her junior year was named to the all-Arizona volleyball team... an all-East Valley selection her senior year by the Arizona Republic... repeated as an all-Arizona pick... played for East Valley Club Volleyball under Scott Swanson... competed at the Junior Olympics, finishing second to Puerto Rico in 1998... holds the Valley Christian record for consecutive matches played (105) and kills in a match (26).

**Personal:** Majoring in communications... parents are Larry and Brenda Harris... has one sister Stacia and one brother Landon... enjoys hanging out with friends, shopping and snowboarding... born Sept. 24, 1981 in Columbia, Missouri... full name is Natalie Nicole Harris.



### Harris' Top Performances

#### Kills

22 at UCLA (11/21/02)  
16 vs. Cincinnati (12/6/02)  
13 vs. Oral Roberts (11/29/02)  
12 Duke (12/01/00)  
10 UC Riverside (9/16/00)

#### Digs

17 at UCLA (11/21/02)  
15 vs. Oral Roberts (9/16/00)  
14 Duke (12/01/00)  
14 at Washington (10/3/02)  
13 at Arizona (11/18/00)

### NATALIE HARRIS' CAREER STATISTICS

YEAR	G	K	E	TA	Pct	Avg	Ast	SA	BS	BA	TB	Dig	Avg
2000	57	65	33	208	.154	1.14	16	8	3	11	14	102	1.79
2001	11	13	15	42	-.048	1.18	0	0	0	0	0	14	1.27
2002	67	143	88	395	.139	2.13	21	8	5	24	29	146	2.18
Career	135	221	136	645	.132	1.64	37	16	8	35	43	262	1.9



# Player Profiles



## Kim Mehlhorn

#7

5-11 • Senior • OH • Tempe, Ariz. (Valley Christian)

**ASU:** Will be in the mix at outside hitter and expected to be a major factor in 2003... had an up-and-down season in 2002 while battling a string of migraine headaches... limited in several matches and did not play against UCLA (11/21) due to headaches... has recorded 18 career double-double matches... enters season with 79 career matches under her belt, averaging 2.39 kpg and 2.04 dpq.

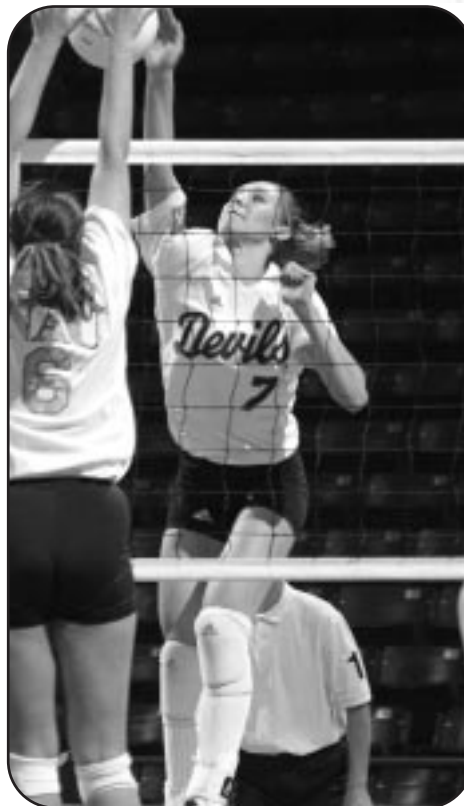
**Junior (2002):** Played in 24 matches in 2002 while making 17 starts... sidelined during the season with a string of severe migraine headaches, including missing the UCLA match (11/21)... named to all-tournament team at Red Raider Classic and UNLV/Hard Rock Thanksgiving Classic... second-team All-Pac-10 Academic selection... ranked fourth on the team averaging 2.31 kills per game and eighth with 1.51 dpq... recorded four of her 18 career double-doubles... ended the regular season on a strong note with 3.33 kpg average in her last six matches (70 total)... had a season-high 17 kills vs. Cincinnati (12/6) in NCAA Tournament... recorded 16 kills and added 10 digs in 3-0 win over Oral Roberts (11/29)... hit .583 with seven kills off the bench to help ASU to 3-1 win over Oregon State (10/19)... notched consecutive double-doubles at the Red Raider Classic vs. Clemson and Texas Tech.

**Sophomore (2001):** Became one of ASU's most potent weapons on the court as the season progressed... she tied or broke her previous career high in kills seven times in 2001... recorded career-high 19 kills vs. Washington State (10/13) and also vs. Arizona (11/3)... finished the year averaging 3.42 kpg (second on team) and 2.76 dpq (third on team) this season... her 2.97 dpq in Pac-10 play ranked eighth in the league... set career high with 19 digs vs. Oregon State (9/22)... started 25 of ASU's 26 matches... moved into starting role at opposite hitter at LMU Volleyball Classic... recorded 15 kills vs. New Mexico (9/7) and 16 vs. Loyola Marymount (9/8), which were then career highs... also had 14 kills in season opener vs. Nevada (8/31)... ranked second on team with 356.5 points per game (3.75 avg)... recorded 13 double-doubles in 2001 and now has 14 in her career... 19 matches with 10 or more kills this year, including a string of 14 of the last 15 matches in 2001... 13 matches with 10+ digs... ranked eighth with 3.83 kills per game in Pac-10 matches only... nominated for Academic All-America District VIII team with 3.71 GPA (undeclared)... averaged 3.88 kills per game over the final 15 matches of 2001.

**Freshman (2000):** Played in 90 games and made 19 starts... missed only one match all year... started mostly as a opposite hitter, but stepped in at defensive specialist the last match of the year vs. Minnesota... named all-Pac-10 Freshman Honorable Mention... averaged 0.72 blocks per game... career high 11 kills vs. Washington State (9/23)... also had 10 kills twice vs. Stanford and UCLA... recorded 18 digs vs. Washington State (10/20)... first career double-double came vs. UCLA with 10 kills and 13 digs (10/13)... had six total blocks twice in rookie campaign.

**High School:** One of four Sun Devils who played under Deanna Anglin for volleyball powerhouse Valley Christian... Valley Christian won state titles each of the four years she played, and the last seven overall... also played under Scott Swanson for the East Valley Juniors club team... club team finished second at nationals in 1998... made the all-tournament team at the USVBA Junior Nationals in Dallas, Texas... selected as a 2A Metro all-region player her sophomore year... made the Arizona Republic all-Arizona team her junior year... four-time all-tournament selection at state at state tournament... led team to a national ranking as high as fifth in the nation her senior year... also competed in track where she participated on the winning 4x100 relay team at the state meet... an outstanding student who maintained a perfect 4.0 and was the salutatorian of her graduating class... member of the National Honor Society.

**Personal:** Interested in pursuing a degree in therapeutic recreation... parents are Wayne and Janie Mehlhorn of Tempe... has one sister Melissa and one brother David... Melissa is sophomore setter at Pepperdine... enjoys playing other sports and shopping... favorite food is cheese pizza... born Nov. 7, 1981 in Mesa, Ariz... full name is Kimberley Anne Mehlhorn.



### Mehlhorn's Top Performances

#### Kills

19	Arizona (11/03/01)
19	Washington State (10/13/01)
18	at Washington (11/10/01)
18	Washington (10/12/01)
17	vs. Cincinnati (12/6/02)
17	Oregon State (9/22/01)
17	California (11/17/01)
17	at California (11/25/01)

#### Digs

19	Oregon State (9/22/01)
18	Washington State (10/20/00)
17	Washington State (10/13/01)

### KIM MEHLHORN'S CAREER STATISTICS

YEAR	G	K	E	TA	Pct	Avg	Ast	SA	BS	BA	TB	Dig	Avg
2000	90	122	53	393	.176	1.36	35	10	9	56	65	150	1.67
2001	95	325	124	880	.228	3.42	20	14	10	15	25	262	2.76
2002	67	155	67	458	.192	2.31	8	4	11	17	28	101	1.51
Career	252	602	244	1731	.207	2.39	63	28	30	88	118	513	2.04

# Player Profiles



## Jodi Proctor

#11

6-1 • RS-Senior • MB • St. Johns, Ariz. (St. Johns)

**ASU:** A great athlete who has also competed high jumper on the ASU Track & Field team... very athletic and mobile who learned the game at the college level... coming off knee surgery during the offseason and will be a big key to ASU's success if she is able to compete in 2003... if healthy, ASU's leading candidate to start at middle blocker... enters her senior season having played in 57 career matches and 192 games... averaging 2.31 kpg and 0.86 blocks per game in her career.

**2002 (RS-Junior):** Started 26 of ASU's 27 matches at middle blocker... recorded 10 or more kills in 12 matches... led the team with 0.86 blocks per game... had four or more blocks in eight of ASU's last 16 matches and 12 total... had career-high eight blocks in five-game win over Cal (10/11)... set season-high with 15 kills vs. Oregon (10/18)... averaged 2.42 kpg to rank third on the team and is third in hitting percentage at .246... had career-high three service aces vs. Pacific (9/7)... had 14 kills and hit .370 in win over No. 13 Pacific (9/7)... had 12 kills in four consecutive matches (9/20-10/3).

**2001 (RS-Sophomore):** Named to all-tournament team at LMU Volleyball Classic... recorded six matches with double-digits in kills, including career-high 21 vs. California (11/17)... set a season and career high by hitting .486 in 21-kill effort vs. Cal... also had a then career-high 13 vs. Loyola Marymount (9/8)... recorded 12 kills vs. South Carolina (9/1) and Northern Arizona (10/23)... added five total blocks vs. Oregon (10/18) and NAU (10/23)... set a career high with 6.0 total blocks (0-6) vs. USC (10/25) and vs. Washington (11/10)... two service aces vs. New Mexico (9/7) were a career high... led the team with 0.86 blocks per game... was fourth with a .269 hitting percentage and ranked fifth with a 2.27 kill/game average.

**2000 (RS-Freshman):** Played in four matches, setting career highs with three kills vs. UC Riverside (9/16) and Washington (10/21)... also saw action in the fourth game vs. USC (11/9)... played in six total games... suffered back injury late in the season.

**High School:** A Track & Field News All-American her senior year as they ranked her as the fourth-best high jump prep prospect in the nation... placed second at the USA Junior National Championships... also participated in the Pan Am Junior Games... three-time state high jump champion... four-time MVP in track & field, three-time team MVP in volleyball and three-time MVP on the hardwood... captained all three squads and earned all-state acclaim her junior and senior seasons... had 487 kills her final two years of volleyball.

**Personal:** Interested in becoming a physical therapist or trainer... parents are Ed and Paula... has five siblings: Danette Askew, Carly, Brett Lee, Erin Finch, and Shawn... born October 4, 1980 in Springerville, Ariz... married to Lincoln Proctor on Dec. 21, 2002 in the Mesa, Arizona Temple.



### Proctor's Top Performances

Kills	
21	California (11/17/01)
15	at Oregon (10/18/02)
14	vs. Pacific (9/7/02)
13	at Loyola Marymount (9/8/01)

Total Blocks (BS-BA)	
8.0 (2-5)	California (10/11/02)
7.0 (2-5)	at Oregon (10/18/02)
6.0 (0-6)	Oregon (11/16/02)
6.0 (0-6)	USC (10/26/01)
6.0 (2-4)	at Washington (11/10/01)

### JODIE PROCTOR'S CAREER STATISTICS

YEAR	G	K	E	TA	Pct	Avg	Ast	SA	BS	BA	TB	Dig	Avg
2000	6	7	4	18	.167	1.17	0	0	0	5	5	1	0.17
2001	88	200	69	487	.269	2.27	14	7	16	60	76	35	0.40
2002	98	236	98	561	.246	2.41	12	14	15	69	84.0	68	0.69
Career	192	443	171	1066	.255	2.31	26	21	31	134	165	104	0.54



# Player Profiles



## Mandy Stephens

#1

6-3 • RS-Senior • MB • Napa, Calif. (Napa)

**ASU:** Good height above the net... solid blocking technique... had a great spring where she showed tremendous power and skills at the net... will contribute greatly at the middle blocker position in 2003 for the Sun Devils... has improved each year in the program and is ready to be an impact player... will be a key for the Devils in 2003 with injuries at middle blocker... has played in 46 matches in her career, averaging 1.98 kills per game.

**2002 (RS-Junior):** Saw action in 15 matches as a junior in 2002, including one start vs. Cal (10/11)... averaged 1.32 kills per game... recorded a season-high six kills on three different occasions... recorded career-high two service aces vs. California (11/9)... had six kills in victory over Creighton (9/7) and six kills vs. Stanford (10/10) while hitting .462... have five kills on a .571 hitting percentage vs. Oral Roberts (11/29)... second on the team with .286 attack percentage.

**2001 (RS-Sophomore):** Averaged 2.51 kills per game while playing in 39 games and 18 matches... made four starts in 2001 at middle blocker... ranked fourth best on the team with 0.46 blocks per game... totaled a then career high in kills with 11 vs. Nevada (8/31)... had 10 kills vs. New Mexico... had five kills and two blocks vs. Oregon (9/21)... eight kills vs. UCLA (9/29)... recorded three matches with 10 or more kills and now has five 10+ kill matches in her career... ended the year with a career-high 19 kills while hitting .412 in season finale vs. Cal (11/25).

**2000 (RS-Freshman):** Played in 12 matches and 33 games in 2000... had two matches with double-digits in kills... posted career high 11 kills vs. Southwest Texas (9/9)... had 10 kills vs. Arizona (9/13).

**1999 (Freshman):** Redshirt year.

**High School:** A 1999 graduate of Napa High School in Napa, Calif.... two year letterwinner in volleyball, four-year letterwinner in basketball and track... team captain in '99... 1998-99 Napa County Female Athlete of the Year... '98 team MVP... all-county selection in '98... led the team, league and county in kills (320) in 1998... '98 all-conference selection... holds Napa HS basketball record for most blocks in a season (178) and career (288)... ended high school holding the Napa HS record in the high jump (5-2)... member of Empire Volleyball Club (2 years)... Napa County Basketball Player of the Year ('99 ... Napa HS Female Athlete of the Year ('98-'99).

**Personal:** Major is Communications... parents are William and Toni Stephens of Napa, Calif.... has two brothers, Derek and Michael... enjoys watching TV, dancing, music and riding down escalators... favorite food is candy... lists her favorite move as Sixteen Candles... queen of Beverly Hills 90210 trivia... fears mullets and clowns... loves watching dating shows... once slid down the middle of two escalators and broke her big toe on a road trip at UCLA/USC... born December 1, 1980... full name is Mandy Louise Stephens.



### Stephens' Top Performances

#### Kills

19	California (11/25/01)
11	Nevada (8/31/01)
11	Southwest Texas (9/9/00)
10	New Mexico (9/7/01)
10	Arizona (9/13/00)

#### Total Blocks (BS-BA)

5.0 (0-5)	Saint Louis (9/8/00)
4.0 (0-4)	Southwest Texas (9/9/00)

### MANDY STEPHENS' CAREER STATISTICS

YEAR	G	K	E	TA	Pct	Avg	Ast	SA	BS	BA	TB	Dig	Avg
2000	33	61	22	150	.260	1.85	2	1	1	17	18	10	0.30
2001	39	98	37	216	.282	2.51	3	0	5	13	18	8	0.21
2002	25	33	11	77	.286	1.32	1	3	0	4	4	8	0.32
Career	97	192	70	443	.275	1.98	6	4	6	34	40	26	0.27

# Player Profiles



## Sarah Watkins

#14

5-11 • Sophomore • OH • Mishawaka, Ind. (Mishawaka)

**ASU:** Expected to add depth at the outside hitter and opposite hitter positions... played well during spring drills and is expected to see playing time with Juliana Escobar, Natalie Harris and Kim Mehlhorn... has tremendous skills at both positions... saw action in 23 games as a freshman, including a memorable double-double (11 kills, 22 digs) against Washington (11/2).

**2002 (Freshman):** One of two true freshmen to play in 2002... appeared in 10 matches, making three starts... made her first career start against Washington (11/02) and recorded her first career double-double with 11 kills and 22 digs... sidelined late in the season with an ankle injury... played in all three games vs. Creighton (9/7), recording one dig and one service ace... came off the bench in win vs. California (10/11) to record six kills while hitting .308... averaged 1.09 kills and 1.52 digs per game.

**High School:** Played four years of volleyball at Mishawaka High School... was team captain junior and senior year... a four-time all-conference selection in the Northern Indiana high school region... named all-state sophomore through senior years and was the team MVP in 2001... helped lead Mishawaka High School to state runner-up finish during freshman year.

**Personal:** Full name is Sarah Elizabeth Watkins... born Nov. 25, 1983 in South Bend, Ind.... parents are Chris and Julie Watkins... has two brothers, Paul and Nick... interested in a secondary education major at ASU... lists playing the clarinet and reading as hobbies.



### Watkins' Top Performances

#### Kills

11 Washington (11/2/02)  
6 California (10/11/02)

#### Digs

22 Washington (11/2/02)

### SARAH WATKINS' CAREER STATISTICS

YEAR	G	K	E	TA	Pct	Avg	Ast	SA	BS	BA	TB	Dig	Avg
2002	23	25	19	92	0.65	1.09	3	3	2	3	5	35	1.52
Career	23	25	19	92	0.65	1.09	3	3	2	3	5	35	1.52



# Newcomer Profiles



## Tierra Burnley

#2

5-11 • Freshman • MB • Santa Clarita, Calif. (Valencia)

**ASU:** An athletic middle blocker who is expected to contribute as a freshman... comes from a good background of volleyball experience at a high level... has unlimited potential to be great player at the college level.

**High School:** Earned three varsity letters in volleyball at Valencia High School... also earned two letters in track... played for Thunder Volleyball Club... earned first-team all-league honors (Foothill League) in 2002 and 2003... named scholar athlete during senior season.

**Personal:** Plans on pursuing a major in pre law at Arizona State... born March 4, 1985 in Canoga Park, Calif.... parents are Damon Burnley and Kayle Tramel... full name is Tierra Janaye Burnley... enjoys watching movies and TV.



## Lindsey Hirzel

#17

5-11 • Freshman • OH • Danville, Calif. (San Ramon)

**ASU:** Adds depth at outside hitter for the Sun Devils... is a player for the future who works hard and will help the team off the bench.

**High School:** Earned three varsity letters in volleyball at San Ramon Valley High School... named first-team all-league (East Bay Athletic League) in 2001 and 2002... helped lead team to back-to-back undefeated seasons during junior and senior years... named athlete of the month for volleyball during all four years of her prep career... Contra Costa Times Athlete of the Week... played club volleyball for Club Sport Volley.

**Personal:** Interested in a business major at Arizona State... born August 4, 1985 in Fort Wayne, Ind.... full name is Lindsey Renee Hirzel... parents are Jim and Beth Hirzel... mother is a court reporter and father is a manager... has one brother, Jason (20)... enjoys snowboarding, grass volleyball, skate boarding and surfing.



## Stephanie Kohner

#9

5-7 • Junior • L/DS • Anthem, Ariz. (Phoenix Christian/Glendale CC)

**ASU:** An athletic defensive player who is expected to contribute playing time at libero behind Courtney Blocher... comes from a successful junior college program... coached by former Sun Devil All-American Lisa Stuck.

**Junior College:** Played two years at Glendale Community College... played libero and outside hitter during her JC career... helped lead team to regional championship in 2002 and a third-place finish in nationals... finished second in the ACCAC (Arizona Community College Athletic Conference) with 5.27 digs per game in 2002... named second-team all-ACCAC.

**High School:** Attended Phoenix Christian High School... earned four varsity letters in basketball and volleyball... led volleyball team in digs three years... recorded 417 kills during her senior year to break single-season school record... earned honorable mention all-league honors during sophomore year... captain of volleyball team junior and senior year, and basketball during senior year... team MVP and 1st team all-region junior and senior year... All-State Tournament team member... basketball team MVP during senior year and also earned 1st team all-region... led team in three-pointers and steals during senior season.

**Personal:** Pursuing a degree in health and nutrition and kinesiology at Arizona State... parents are Stephen and Patty Kohner of Anthem, Ariz.... has two older brothers, Shawn and Tim... born August 24, 1983... full name is Stephanie Marie Kohner... enjoys sleeping, hanging out with friends and working out.

# Newcomer Profiles



## Giovana Melo

#6

5-9 • Junior • Setter • Ribeirao Preto, Brazil (Western Nebraska CC)

**ASU:** A high-energy player who bounces around the court... a two-time junior college All-American... expected to split time at setter with senior Cheryl Anglin... the third recent Brazilian player to suit up for the Sun Devils... should work nicely with outside hitter Juliana Escobar.

**Junior College:** Played two years at Western Nebraska Community College in Scottsbluff, Nebraska... coached by Chris Green... earned all-region and All-American honors in 2001 and 2002... named second-team NJCAA/AVCA All-American in 2001... repeated as a second-team All-American selection in 2002... helped WNCC to a pair of Region IX championships and a third-place finish at nationals in 2001... team won district championship in 2002... was a "Cougar Award" recipient at a top student-athlete in 2002-03.

**High School:** Attended Otoniel Motta in Ribeirao Preto... graduated in 1999... played soccer and volleyball... captain of volleyball team during junior and senior years... named athlete of the year for her high school in 1998.

**Personal:** Interested in a physical education major at Arizona State... a native of Ribeirao Preto, Brazil... born May 2, 1981 in Rib. Preto in the state of Sao Paulõ... teammates call her 'G'... parents are Francisco and Ledinèa... has one older sister, Lilian Carla Marques... enjoys watching TV and listening to music.



## Nicole Morton

#12

5-10 • Freshman • OH • Bonsall, Calif. (Fallbrook Union)

**High School:** A 2003 graduate of Fallbrook Union High School... earned four varsity letters in track and three in volleyball... captain of the volleyball squad during junior and senior years... plays for RSF Nike and Vintage club programs in volleyball... in track finished first in the Avocado League in the high jump with a school record (5'4")... earned team most improved award in 2001 in volleyball... team captain and MVP during senior year... earned first-team All-North County and first-team All-CIF... 2002 winner of the Coca-Cola Golden Spike Award...

played in the Senior All-Star Match.

**Personal:** Interested in a degree in business at Arizona State... born Sept. 24, 1985 in Glendale, Calif.... full name is Nicole Leanne Morton... parents are Bryce Morton and Cheryl Donelson... father played rugby and football at Occidental College in Pasadena, Calif... has four sisters (Amie, Stephanie, Michelle and Mikayia) and one younger brother, Mark... lists her most exciting moment in sports as winning the league high jump championship and receiving the Coca-Cola Golden Spike Award... enjoys weightlifting, mountain biking, snow boarding and reading.



## Katie Wilson

#16

6-3 • Freshman • MB/OP • Fullerton, Calif. (Sunny Hills)

**High School:** A 2003 graduate of Sunny Hills High School in Fullerton, Calif... played one year of basketball and three years of volleyball... captain of volleyball team during senior year... named all-league (Freeway League) during junior and senior years... Orange County All-Star in 2002... received an academic award for earning a 3.5 GPA or higher during prep career... named team's top offensive player in 2001... played club volleyball for Saddleback Volleyball Club.

**Personal:** Undecided on a major at Arizona State... born Aug. 15, 1985 in Fullerton, Calif.... parents are Daniel and Shannon Wilson... father is a dentist... has one younger sister, Kelly... full name is Kathlyn Louise Wilson... enjoys drawing and painting and volunteering with different charities.



# 2002 Season Results

## 2002 Results

**Overall Record:** 15-12

**Pac-10 Record:** 8-10

**Home:** 5-4

**Home:** 5-4

**Away:** 4-8

**Away:** 3-6

**Neutral:** 6-0

**Tournaments:** 4-1

DATE	OPPONENT	LOCATION	RESULT	KILL LEADER	ATT
Sept. 6	& at South Carolina	Columbia, S.C.	L, 31-33, 33-31, 26-30, 25-30	Escobar (22)	1,023
Sept. 7	& vs. #13 Pacific	Columbia, S.C.	W, 30-28, 29-31, 30-21, 24-30, 15-12	Escobar (25)	237
Sept. 7	& vs. Creighton	Columbia, S.C.	W, 30-18, 30-11, 30-20	Escobar (12)	---
Sept. 14	# vs. Clemson	Lubbock, Texas	W, 30-22, 30-23, 24-30, 28-30, 15-12	Escobar (21)	55
Sept. 15	# at Texas Tech	Lubbock, Texas	W, 25-30, 27-30, 30-25, 30-23, 16-14	Escobar (22)	347
Sept. 20	*#1 USC	Tempe, Ariz.	L, 20-30, 22-30, 27-30	Smith-Proctor (12)	888
Sept. 21	*#11 UCLA	Tempe, Ariz.	W, 30-26, 28-30, 30-23, 30-26	Escobar (23)	1165
Sept. 27	*#12 Arizona	Tempe, Ariz.	W, 33-31, 30-26, 42-40	Escobar (20)	3243
Oct. 3	*at Washington	Seattle, Wash.	W, 30-24, 30-28, 27-30, 25-30, 15-13	Escobar (20)	423
Oct. 4	*at #19 Wash. State	Pullman, Wash.	L, 17-30, 19-30, 23-30	Leddy (12)	1852
Oct. 10	*#4 Stanford (Fox)	Tempe, Ariz.	L, 20-30, 18-30, 16-30	Escobar/Leddy (8)	1182
Oct. 11	*California	Tempe, Ariz.	W, 27-30, 21-30, 30-27, 30-26, 15-10	Leddy (15)	978
Oct. 18	*at Oregon	Eugene, Ore.	W, 29-31, 31-29, 32-34, 30-28, 15-10	Escobar (27)	885
Oct. 19	*at Oregon State	Corvallis, Ore.	W, 31-29, 30-28, 21-30, 30-28	Leddy (18)	764
Oct. 25	*at #16 Arizona	Tucson, Ariz.	L, 18-30, 16-30, 22-30	Escobar (13)	1982
Nov. 1	#17 Washington State	Tempe, Ariz.	L, 20-30, 24-30, 28-30	Escobar (11)	711
Nov. 2	*Washington	Tempe, Ariz.	L, 27-30, 27-30, 30-27, 22-30	Escobar (24)	765
Nov. 8	*at #4 Stanford	Stanford, Calif.	L, 19-30, 20-30, 18-30	Escobar (18)	2333
Nov. 9	*at California	Berkeley, Calif.	L, 20-30, 26-30, 22-30	Leddy (14)	340
Nov. 15	*Oregon State	Tempe, Ariz.	W, 30-28, 31-29, 30-25	Escobar/Leddy (14)	921
Nov. 16	*Oregon	Tempe, Ariz.	W, 28-30, 30-23, 30-17, 30-27	Escobar (23)	1180
Nov. 21	*at #21 UCLA	Los Angeles, Calif.	L, 30-26, 22-30, 22-30, 30-23, 13-15	Harris (22)	393
Nov. 22	*at #1 USC	Los Angeles, Calif.	L, 24-30, 15-30, 15-30	Mehlhorn/Harris (9)	766
Nov. 29	% vs. Oral Roberts	Las Vegas, Nev.	W, 30-27, 30-26, 30-26	Mehlhorn (16)	64
Nov. 30	% vs. Weber State	Las Vegas, Nev.	W, 30-25, 30-25, 30-18	Leddy (11)	254
Dec. 6	^ vs. Cincinnati	Lincoln, Neb.	W, 35-33, 30-20, 27-30, 19-30, 15-10	Escobar (23)	1672
Dec. 7	^ at #4 Nebraska	Lincoln, Neb.	L, 22-30, 21-30, 27-30	Escobar (15)	4229

### SCHEDULE LEGEND

& South Carolina Volleyball Classic (South Carolina, Creighton, Pacific, Arizona State)

# Texas Tech Red Raider Classic (Texas Tech, Arizona State, Clemson)

% UNLV Thanksgiving Classic (UNLV, Oral Roberts, Weber State, Arizona State)

^ NCAA First and Second Round (Lincoln, Neb.)

\*Pac-10 Conference Match



*The 2002 Arizona State Sun Devil Volleyball Team.*

# 2002 Statistics/Review

Overall Record: 15-12 Pac-10: 8-10 Home: 5-4 Away: 4-8 Neutral: 6-0

##	Name	GP	ATTACK					SET		SERVE			
			MP-MS	K	K/Game	E	TA	Pct	A	A/Game	SA	SA/Gm	SE
3	Escobar, Juliana	98	26-26	420	4.29	224	1128	.174	23	0.23	50	0.51	82
5	Leddy, Julia	102	27-27	313	3.07	70	662	.367	17	0.17	10	0.10	29
11	Smith, Jodi	98	27-26	236	2.41	98	561	.246	12	0.12	14	0.14	48
7	Mehlhorn, Kim	67	24-17	155	2.31	67	458	.192	8	0.12	4	0.06	19
4	Harris, Natalie	67	23-11	143	2.13	88	395	.139	21	0.31	8	0.12	32
2	Akporiaye, Alicia	83	24-23	156	1.88	76	435	.184	31	0.37	15	0.18	13
1	Stephens, Mandy	25	16-1	33	1.32	11	77	.286	1	0.04	3	0.12	2
14	Watkins, Sarah	23	10-3	25	1.09	19	92	.065	3	0.13	3	0.13	5
12	Habiger, Fernanda	74	25-1	41	0.55	14	139	.194	268	3.62	0	0.00	1
10	Anglin, Cheryl	100	27-26	30	0.30	17	113	.115	994	9.94	7	0.07	13
8	Blocher, Courtney	101	27-1	8	0.08	9	45	-.022	25	0.25	8	0.08	14
15	Pirzynski, Nora	27	13-0	2	0.07	0	8	.250	3	0.11	0	0.00	1
13	Arnett, Brittany	63	22-0	1	0.02	1	9	.000	10	0.16	0	0.00	0
	ARIZONA STATE...	102	27-27	1563	15.32	694	4122	.211	1416	13.88	122	1.20	259
	Opponents.....	102	27-27	1575	15.44	603	4090	.238	1374	13.47	128	1.25	239

##	Name	G	DIG		BLOCKING							
			RE	DIG	Dig/G	BS	BA	Total	B/Game	BE	BHE	
3	Escobar, Juliana	98	26	329	3.36	14	22	36	0.37	1	0	
5	Leddy, Julia	102	0	63	0.62	22	60	82	0.80	11	3	
11	Smith, Jodi	98	0	68	0.69	15	69	84	0.86	12	3	
7	Mehlhorn, Kim	67	11	101	1.51	11	17	28	0.42	0	1	
4	Harris, Natalie	67	9	146	2.18	5	24	29	0.43	4	1	
2	Akporiaye, Alicia	83	6	158	1.90	8	33	41	0.49	7	3	
1	Stephens, Mandy	25	0	8	0.32	0	4	4	0.16	3	0	
14	Watkins, Sarah	23	4	35	1.52	2	3	5	0.22	1	2	
12	Habiger, Fernanda	74	0	18	0.24	9	26	35	0.47	4	9	
10	Anglin, Cheryl	100	1	187	1.87	2	11	13	0.13	2	25	
8	Blocher, Courtney	101	27	292	2.89	0	0	0	0.00	0	1	
15	Pirzynski, Nora	27	5	26	0.96	0	0	0	0.00	0	0	
13	Arnett, Brittany	63	20	173	2.75	0	0	0	0.00	0	2	
	TEAM		19									
	ARIZONA STATE...	102	128	1604	15.73	88	269	222.5	2.18	45	50	
	Opponents.....	102	122	1480	14.51	68	403	269.5	2.64	52	41	

## 2002 Record Breakdown

Overall .....15-12  
Pac-10 .....8-10  
Non-Conf. ....7-2  
Vs. Ranked Teams .....3-9  
Vs. Unranked Teams .....12-3  
Home .....5-4  
Away .....7-8  
Neutral .....6-0  
Tournaments .....4-1

September .....6-2  
October .....4-3  
November .....4-6  
December .....1-1  
Wednesday .....0-0  
Thursday .....1-2  
Friday .....6-7  
Saturday .....7-3  
Sunday .....1-0

3-Game Match .....5-9  
4-Game Match .....3-2  
5-Game Match .....7-1  
When Win Game 1 .....11-1  
When Lose Game .....4-11  
Leading in Kills .....12-1  
Trailing in Kills .....3-11  
Leading in Digs .....13-4  
Trailing in Digs .....2-8



# ASU Volleyball History

**A**rizona State University's women's volleyball program celebrates its 31st anniversary in 2003 with the academic and athletic success that have taken many programs many decades to achieve on the national level.

The Sun Devils initiated the program in fine style in 1973, when they captured the first-ever Intermountain Conference championship. ASU finished the season ranked 15th nationally under the guidance of head coach Mary Littlewood. At that time, Littlewood also handled head softball and basketball coaching duties. The following season saw the Sun Devils finish second in the conference en route to another top 20 national ranking (19th) in the final AIAW poll.

Throughout the 1970s, Arizona State played solid, fundamental volleyball and finished among the upper division in the Intermountain Conference on a regular basis.

Joanie Smith was ASU's first volleyball star, as she garnered all-conference honors in 1976. The likes of Nancy Corea, Sheri Lobb and Donna Stuhr further helped ASU establish itself on the national scene during the '70s.

Dale Flickinger, ASU's second volleyball coach (1979-82), elevated the program and developed it into one of the nation's up-and-coming programs. The 1979 season also marked the debut of a new conference for the Sun Devils — the Western Collegiate Athletic Association (WCAA).

The 1980 campaign saw the entrance of Lisa Stuck and Terri Edison, and the tandem helped ASU to its initial 20-win season (24-17). Stuck became Arizona State's first all-America performer due to her explosive and powerful offensive skills. She ranks among the career kill and service ace leaders, and still owns the school mark for most kills in a match (35).

The Debbie Brown Era (1983-88) allowed the Sun Devils to move into the nation's top 10 and produce such All-Americans as Tammy Webb, Regina Stahl and Christy Nore.

Brown, a member of the 1980 U.S. Olympic team and assistant coach on the '88 U.S. Olympic squad, made stellar defensive skills



**Former Sun Devil All-American Christy Nore (1985-88) led the country in digs and ranked among the top 20 in kills in 1988. She was elected to the ASU Hall of Fame in 2002.**

commonplace in the Sun Devil program. Brown is currently the head coach at the University of Notre Dame.

Excellence in the setter position has been synonymous with ASU volleyball for most of the program's life. Joan Oakley began the trend of solid passing technique and earned all-conference accolades as a freshman in 1978. Heather Forbes then followed Oakley as the Sun Devils' playmaker. Regina Stahl ranked among the nation's career assist leaders (5,180) when she graduated and guided the Sun Devils to three NCAA berths and eventually received All-America honors in 1986. Stahl's replacement, Noelle Fridrich, continued the strong setting tradition at Arizona State to close out the 1980s. Jennifer Helfrich continued the tradition into the 90s. Sun Devil Tiffannie Johnson-Gates closed out her career by entering the ASU record books ranked fourth in career assists (2,698). Current starting setter Cheryl Anglin has emerged as the No. 2 all-time

setter in school history with 3,560 assists.

Offensively, the names of Christine Garner, Webb, Nore, Valentina Vega, Amanda Burbridge, Tracey Barberie, Julia Leddy and Mindy Gowell (now Mindy Rich) are found throughout the record section. A valuable member on the '88, '92 and '96 U.S. Olympic teams, Webb, now Tammy Liley, was one of the most dominating figures on the collegiate scene. Her strength, leaping ability and general knowledge of the game allows her to remain a vital cog of the U.S. National team.

Nore was perhaps the top 'athlete' to play volleyball at ASU, as quickness, power and precise passing made her a feared opponent. She led the country in digs and ranked among the top 20 in kills in 1988, while tallying nearly 1,600 kills and digs during her tenure.

Labeled as one of Arizona State's first prized recruits, Vega finished her career with more than 1,000 kills and 1,000 digs, while playing in three NCAAAs. Like Vega, Barberie provided the Sun Devils with a solid offensive and defensive threat throughout her four-year career. The outside hitter/middle blocker registered 1,032 kills and 1,104 digs, one of only seven players to surpass the 1,000 mark in both categories.

During the 1990's, Christine Garner set herself apart by becoming ASU's all-time kills leader, pounding out an incredible 1,871 kills in her four years. Garner also notched over 1,000 digs and 100 service aces during her career. For her accomplishments, she was named a second-team AVCA All-America in '95. Garner also won a silver medal at the 1994 Goodwill Games.

Amanda Burbridge (1997-2000) is the latest in the line of great Sun Devil volleyball players. Burbridge set the single-season record for kills with 599 in 2000 and was a second-team AVCA All-American. She finished her career with 1,597 career kills, ranking third in ASU history. In addition to being a second-team All-American in 2000, Burbridge was a two-time All-Pac-10 selection and was the AVCA National Player of the Week in 2000 after setting the school single-match record for kills (39) vs. Washington.

In addition to the numerous on-court accolades, ASU has also made an impact with its academic success. Seven student-athletes (Burbridge, Jami Coughlin, Jennifer Helfrich, Mindy Gowell-Rich, Tracie Kisro, Noelle Fridrich) have earned academic All-American awards. Coughlin, ASU's new assistant coach for 2003, also ranks second in career digs with 1,528.

The Sun Devils head into the 2003 season with a new head coach in Brad Saindon and hope to carry the momentum that has seen the program advance to the NCAA Tournament in three of the last four years.

## ASU All-Time Coaches

Coach	Years	Record
Brad Saindon	2003-P	0-0
Patti Snyder-Park	1989-2002	216-181
Debbie Brown	1983-88	117-83
Dale Flickinger	1979-82	81-58
Mary Littlewood	1973-78	95-36
<b>ASU Totals</b>		<b>509-358 (.587)</b>

# Year-by-Year Results

## Year-By-Year

Year	Record	Conf. Rec. (Place)	Conference	Post-Season	Coach
2002	15-12	8-10 (7th)	Pacific-10	NCAA 2nd Round	Patti Snyder-Park
2001	10-16	5-13 (7th)	Pacific-10		Patti Snyder-Park
2000	18-12	9-9 (t-5th)	Pacific-10	NCAA 2nd Round	Patti Snyder-Park
1999	14-13	10-8 (5th)	Pacific-10	NCAA 1st Round	Patti Snyder-Park
1998	11-14	8-10 (15th)	Pacific-10		Patti Snyder-Park
1997	13-16	4-14 (8th)	Pacific-10		Patti Snyder-Park
1996	9-15	4-14 (8th)	Pacific-10		Patti Snyder-Park
1995	19-8	11-7 (T4th)	Pacific-10	NCAA Sweet 16	Patti Snyder-Park
1994	18-10	11-7 (4th)	Pacific-10	NCAA Sweet 16	Patti Snyder-Park
1993	20-8	13-5 (2ndT)	Pacific-10	NCAA 2nd Round	Patti Snyder
1992	23-8	11-7 (4th)	Pacific-10	NCAA 2nd Round	Patti Snyder
1991	14-12	8-10 (6th)	Pacific-10		Patti Snyder
1990	19-16	8-10 (6th)	Pacific-10	Nat. Invitational	Patti Snyder
1989	13-21	4-14 (9th)	Pacific-10		Patti Snyder
1988	20-13	8-10 (6th)	Pacific-10	NCAA Regional	Debbie Brown
1987	16-15	9-9 (7th)	Pacific-10	NCAA Regional	Debbie Brown
1986	27-7	13-5 (3rd)	Pacific-10	NCAA Regional	Debbie Brown
1985	22-13	2-6	Pacific West	NCAA Regional	Debbie Brown
1984	15-18	3-11	WCAA		Debbie Brown
1983	17-17	6-8	WCAA	NCAA Regional	Debbie Brown
1982	31-16	8-6	WCAA	NCAA Regional	Dale Flickinger
1981	13-16	4-8	WCAA	NCAA Regional	Dale Flickinger
1980	24-17	4-8	WCAA		Dale Flickinger
1979	13-9	4-8	WCAA		Dale Flickinger
1978	13-7	9-4	Intermountain		Mary Littlewood
1977	14-8	8-4	Intermountain		Mary Littlewood
1976	15-7	8-4	Intermountain		Mary Littlewood
1975	21-8	13-5	Intermountain		Mary Littlewood
1974	11-6	10-2	Intermountain	AIAW Champ.	Mary Littlewood
1973	21-0	8-0	Intermountain	AIAW Champ.	Mary Littlewood

ASU Totals 509-358 (.587)

## National/Pac-10 Awards

### Pac-10 Players of the Week (14)

Tammy Webb (Sept. 29, 1986)  
 Tammy Webb (Dec. 1, 1986)  
 Sue Nord (Nov. 2, 1987)  
 Christy Nore (Sept. 6, 1988)  
 Christy Nore (Oct. 31, 1988)  
 Christy Nore (Nov. 28, 1988)  
 Debbie Penny (Oct. 28, 1991)  
 Leanne Schuster (Oct. 19, 1992)  
 Christine Garner (Nov. 23, 1992)  
 Christine Garner (Oct. 18, 1993)  
 Christine Garner (Nov. 1, 1993)  
 Christine Garner (Oct. 16, 1995)  
 Amanda Burbridge (Oct. 23, 2000)  
 Juliana Escobar (Sept. 30, 2002)

### AVCA All-Americans

Tammy Webb 1985-86  
 Regina Stahl 1986 (2nd)  
 Christy Nore 1988  
 Christine Garner 1995 (2nd)  
 Amanda Burbridge 2000 (2nd)

### Final AVCA Rankings

1982 9th  
 1983 18th  
 1985 13th  
 1986 13th  
 1988 14th  
 1992 14th  
 1993 10th  
 1994 15th  
 1995 11th



### AVCA National Players of the Week:

Christine Garner (Oct. 16, 1995)  
 Amanda Burbridge (Oct. 23, 2000)



2000 All-Pac-10 Player Amanda Burbridge



# Yearly Statistical Leaders

## Yearly Statistical Leaders

<b>Kills</b>			<b>Assists</b>			<b>Hitting Percentage</b>		
2002	Juliana Escobar	420	2002	Cheryl Anglin	994	2002	Julia Leddy	.367
2001	Jami Coughlin	349	2001	Cheryl Anglin	1114	2001	Julia Leddy	.352
2000	Amanda Burbridge	599	2000	Cheryl Anglin	1452	2000	Julia Leddy	.328
1999	Amanda Burbridge	412	1999	Becky Sidoti	1059	1999	Jamie Peck	.282
1998	Amanda Burbridge	456	1998	Jolynn Faatulu	1228	1998	Jamie Peck	.241
1997	Terri Cox	417	1997	Jolynn Faatulu	998	1997	Laura Hibbsman	.264
1996	Terri Cox	441	1996	Tracy Heflin	1122	1996	Kirstin Mattson	.206
1995	Christine Garner	424	1995	Tracy Heflin	721	1995	Holly Sones	.282
1994	Christine Garner	477	1994	Tiffannie Johnson-Gates	1098	1994	Holly Sones	.248
1993	Christine Garner	495	1993	Tiffannie Johnson-Gates	1000	1993	Holly Sones	.220
1992	Christine Garner	475	1992	Jennifer Helfrich	1250	1992	Christine Garner	.280
1991	Mindy Gowell	346	1991	Leanne Schuster	508	1991	Debbie Penney	.305
1990	Mindy Gowell	555	1990	Jennifer Helfrich	1182	1990	Mindy Gowell	.267
1989	Sue Nord	293	1989	Noelle Fridrich	1086	1989	Sue Nord	.258
1988	Christy Nore	497	1988	Noelle Fridrich	1444	1988	Dawn Meidinger	.308
1987	Christy Nore	345	1987	Regina Stahl	1255	1987	Sue Nord	.331
1986	Christy Nore	436	1986	Regina Stahl	1413	1986	Tammy Webb	.346
1985	Tammy Webb	523	1985	Regina Stahl	1450	1985	Tammy Webb	.353
1984	Tammy Webb	379	1984	Regina Stahl	1062	1984	Tammy Webb	.301
1983	Lisa Stuck	383				1982	Lisa Stuck	.271
1982	Lisa Stuck	413						
<b>Digs</b>			<b>Service Aces</b>					
2002	Juliana Escobar	329	2002	Juliana Escobar	50			
2001	Jami Coughlin	390	2001	Jami Coughlin	28			
2000	Jami Coughlin	464	2000	Amanda Burbridge	41			
1999	Jami Coughlin	319	1999	Jami Coughlin	31			
1998	Jami Coughlin	355	1998	Jami Coughlin	24			
1997	Terri Cox	361	1997	Terri Cox	24			
1996	Terri Cox	426	1996	Terri Cox	19			
1995	Terri Cox	357	1995	Holly Sones	33			
1994	Leanne Schuster	327	1994	Christine Garner	42			
1993	Leanne Schuster	379	1993	Christine Garner	46			
1992	Christine Everett	374	1992	Nancy Christian	48			
1991	Mindy Gowell	306	1991	Leanne Schuster	28			
1990	Mindy Gowell	601	1990	Nancy Christian	44			
1989	Mindy Gowell	367	1989	Debbie Penney	39			
1988	Christy Nore	556	1988	Tracie Kiero	50			
1987	Christy Nore	318	1987	Tracey Barberie	38			
1986	Tammy Webb	465	1986	Regina Stahl	50			
1985	Tammy Webb	327	1985	Tracey Barberie	63			
1984	Regina Stahl	265	1984	Regina Stahl	65			
1983	N/A		1983	N/A				
1982	Lisa Stuck	29	1982	Lisa Stuck	45			
<b>Block Solos</b>			<b>Block Assists</b>					
2002	Julia Leddy	22	2002	Jodi Smith	69			
2001	Julia Leddy	22	2001	Jodi Smith	60			
2000	Amanda Burbridge	32	2000	Michelle Mortensen	98			
1999	Amanda Burbridge	17	1999	Jamie Peck	76			
1998	Shawna Vanley	13	1998	Shawna Vanley	111			
1997	Kirstin Mattson	28	1997	Kirstin Mattson	111			
1996	Kirstin Mattson	35	1996	Laura Hibbsman	83			
1995	Holly Sones	28	1995	Annette Monsen	87			
1994	Kirstin Mattson	38						
1993	Nancy Christian	27						
1992	Amy Nelson	73						
1991	Amy Nelson	47						
1990	Tina Berg	74						



Single-Season Hitting Percentage  
Record Holder Julia Leddy (1999-2002)

# ASU Records

## Individual Match Records

### Kills

1. Amanda Burbridge (WSU, 10/20/00)	39
2. Amanda Burbridge (UW, 10/21/00)	38
3. Lisa Stuck (Santa Clara, 10/22/82)	35
4. Amanda Burbridge (Washington, 9/18/98)	34
Christine Garner (New Mexico, 9/10/93)	34
6. Christine Garner (Santa Clara, 9/4/93)	33
7. Christine Garner (Arizona, 10/15/93)	32
Valentina Vega (Nebraska, 9/27/86)	32
9. Amanda Burbridge (Cal Poly, 9/1/00)	31
10. Terri Cox (Washington, 11/16/96)	30
Lisa Stuck (CPSLO, 12/10/82)	30
Valentina Vega (UCLA, 9/21/86)	30
Christy Nore (Washington, 10/10/87)	30
14. Amanda Burbridge (Bradley, 9/11/98)	29
Amanda Burbridge (SWT, 9/5/99)	29
Lisa Stuck (Illinois State, 12/4/82)	29

### Assists

1. Regina Stahl (Washington, 10/10/87)	90
2. Cheryl Anglin (WSU, 10/20/00)	84
3. Tracy Heflin (Oregon, 10/26/96)	80
4. Tracy Heflin (New Mexico, 9/10/93)	78
5. Cheryl Anglin (Cal Poly, 9/1/00)	77
6. Cheryl Anglin (Oregon, 10/18/02)	75
7. Regina Stahl (Nebraska, 9/27/86)	75
8. Jolynn Faatulu (Washington, 9/18/98)	74
Tracy Heflin (UCLA, 10/14/95)	74

10. Regina Stahl (Oregon, 9/12/86)	73
11. Cheryl Anglin (WSU, 9/23/00)	71
Regina Stahl (Washington, 11/22/86)	71
13. Noelle Fridrich (NAU, 10/11/89)	70
Cheryl Anglin (Cincinnati, 12/6/02)	70
15. Jolynn Faatulu (WSU, 11/20/98)	69
Regina Stahl (Arizona, 12/7/85)	69
Regina Stahl (LSU, 11/25/84)	69
18. Jolynn Faatulu (George Washington, 9/4/98)	68
19. Cheryl Anglin (UW, 10/21/00)	67
Cheryl Anglin (Clemson, 9/14/02)	67
Regina Stahl (UCLA, 9/21/86)	67

### Block Solos

1. Tracey Barberie (Utah, 9/7/85)	9
2. Sue Nord (Wyoming, 9/26/86)	8
Tina Berg (USIU, 10/22/87)	8
4. Tammy Webb (Stanford, 10/18/85)	7
Sue Nord (Oregon, 9/12/86)	7
6. Terri Edison (Arizona, 10/14/83)	6
Kirstin Mattson (Sac State, 10/28/94)	6

### Block Assists

1. Dawn Meidinger (Oregon State, 9/30/88)	12
2. Heather Forbes (Stanford, 10/23/82)	11
Terri Edison (UCLA, 11/10/83)	11
Tina Berg (Washington, 11/6/89)	11
5. Leanne Schuster (UCSB, 11/26/93)	10

Tina Berg (three times)	10
Nancy Christian (Arizona, 9/13/90)	10
8. (14 times, last by Leddy vs. WSU, 10/9/99)	9

### Digs

1. Christy Nore (Oregon State, 10/29/88)	44
2. Christy Nore (Arizona, 10/21/88)	41
3. Kelly Plaisted (UCLA, 10/13/90)	34
4. Terri Cox (Arizona, 11/8/96)	33
5. Christy Nore (Washington, 11/17/88)	32
Kelly Plaisted (Texas Tech, 9/1/90)	32
7. Mindy Gowell (Oregon, 9/14/89)	31
Mindy Gowell (UCLA, 10/20/89)	31
Kelly Plaisted (UCLA, 10/20/89)	31
10. Jami Coughlin (Washington, 11/10/01)	30
Terri Cox (Arizona, 9/13/95)	30
Terri Cox (Washington, 9/22/95)	30
Mindy Gowell (Texas Tech, 9/1/90)	30

### Service Aces

1. Regina Stahl (New Mexico, 9/7/84)	9
2. Tracey Barberie (Stanford, 10/18/85)	8
3. Amanda Burbridge (Minnesota, 12/2/00)	7
Heather Forbes (CS Fullerton, 10/25/80)	7
JoElyn Boone (CS Fullerton, 10/25/80)	7
Regina Stahl (Indiana, 9/6/87)	7
7. (15 times, last time by Juliana Escobar)	6

## Rally Scoring Records

### Team Records:

<b>Kills:</b>	
93	vs. Cincinnati (12/6/02)
87	at Oregon (10/18/02)
82	at Washington (10/03/02)
81	vs. Clemson (9/14/02)
80	vs. California (11/17/01)

### Attack Percentage (K-E-TA):

.461 (46-11-76)	Creighton (9/7/02)
.404 (56-10-114)	Oregon (10/18/01)
.369 (57-12-122)	Oregon State (11/15/02)
.341 (80-19-179)	California (11/17/01)
.336 (53-17-107)	Oregon (9/21/01)

### Assists:

87	vs. Cincinnati (12/6/02)
83	at Oregon (10/18/02)
75	vs. Clemson (9/14/02)
71	vs. California (11/17/01)
69	at Washington (10/03/02)

### Digs:

108	at Oregon (10/18/02)
101	vs. Arizona (11/3/01)
98	vs. Cincinnati (12/6/02)
96	at Washington (11/10/01)
95	vs. Northern Arizona (10/23/01)

### Aces:

16	vs. Pacific (9/7/02)
13	vs. Northern Arizona (10/23/01)
12	vs. Creighton (9/7/02)
8	four times, last at Oregon (10/18/02)

### Total Blocks:

20.5	vs. California (10/11/02)
16.0	vs. Oregon (11/16/02)
14.0	at Oregon State (10/19/02)
13.0	four times, last at UCLA (11/21/02)

### Longest Game by Points:

42-40	vs. Arizona (9/27/02)
38-36	vs. Washington (10/12/01)
36-38	at Loyola Marymount (9/8/01)
35-33	vs. Cincinnati (12/6/02)
35-33	vs. Arizona (11/3/01)

### Individual Records:

<b>Kills:</b>	
27	Juliana Escobar (10/18/02 at Oregon)
25	Juliana Escobar (9/7/02 vs. Pacific)
24	Juliana Escobar (11/2/02 vs. Washington)
23	four times, last by Escobar (12/6/02)

### Attack Percentage (K-E-TA):

.789 (15-0-19)	Julia Leddy (Oregon; 10/18/01)
.650 (14-1-20)	Kim Mehlhorn (Oregon; 9/21/01)
.647 (12-1-17)	Jodi Proctor (USC; 9/20/02)
.625 (16-1-24)	Julia Leddy (Cal; 11/17/01)
.545 (14-2-22)	Julia Leddy (Cal; 11/9/02)

### Assists:

76	Cheryl Anglin (10/18/02 at Oregon)
70	Cheryl Anglin (12/6/02 vs. Cincinnati)
68	Cheryl Anglin (11/17/01 vs. California)
67	Cheryl Anglin (9/14/02 vs. Clemson)
61	Cheryl Anglin (10/12/01 vs. Washington)

### Digs:

30	Jami Coughlin (11/10/01 at Washington)
26	Juliana Escobar (12/6/02 vs. Cincinnati)
26	Juliana Escobar (10/18/02 at Oregon)
26	Jami Coughlin (11/3/01 vs. Arizona)
26	Courtney Blocher (11/3/01 vs. Arizona)

### Aces:

6	Juliana Escobar (9/7/02 vs. Creighton)
5	Juliana Escobar (10/18/02 at Oregon)
5	Jami Coughlin (10/23/01 vs. NAU)
4	four times, last by Blocher (11/16/02)

### Total Blocks:

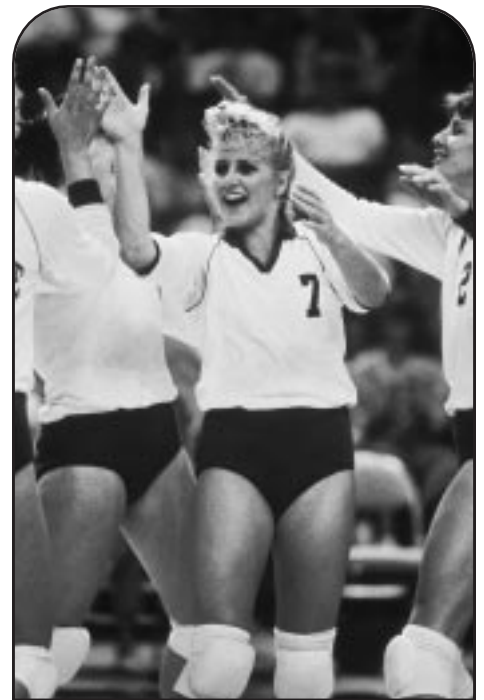
8.0	Jodi Proctor (10/11/02 vs. California)
8.0	Alicia Akporiaye (10/11/02 vs. California)
8.0	Julia Leddy (10/11/02 vs. California)
8.0	Julia Leddy (9/8/01 vs. Loyola Marymount)
7.0	Jodi Proctor (10/18/02 at Oregon)

### Points (K + Aces + BS + 1/2 BA)

32.5	Juliana Escobar (10/18/02 at Oregon)
32.0	Juliana Escobar (9/7/02 vs. Pacific)
27.5	Juliana Escobar (11/16/02 vs. Oregon)
27.0	Juliana Escobar (12/6/02 vs. Cincinnati)
26.5	Juliana Escobar (9/15/02 at Texas Tech)

Kills		Block Solos		Digs		Service Aces	
1. Christine Garner, 1992-95	1871	1. Tammy Webb, 1983-86	196	1. Amanda Burbridge, 1997-2000	195	5. Valentina Vega, 1982-86	143
2. Tammy Webb, 1983-86	1679	2. Tina Berg, 1987-90	152	16. Holly Sones, 1992-95	181	Tammy Webb, 1983-86	143
3. Amanda Burbridge, 1997-2000	1597	3. Tracey Barberie, 1984-87	138	<b>Digs</b>			
4. Christy Nore, 1985-88	1517	4. Amy Nelson, 1990-92	124	1. Christy Nore, 1985-88	1597	7. Nancy Christian, 1990-93	139
5. Valentina Vega, 1982-83, 85-86	1392	5. Sue Nord, 1986-89	116	2. Jami Coughlin, 1988-2001	1528	8. Jami Coughlin, 1988-2001	108
6. Jami Coughlin, 1998-2001	1360	6. Kirstin Mattson, 1993-97	104	3. Terri Cox, 1994-97	1382	9. Leanne Schuster, 1991-94	107
7. Lisa Stuck, 1980-83	1296	<b>Block Assists</b>		4. Mindy Gowell, 1987-91	1365	10. Jennifer Helfrich, 1989-92	104
8. Mindy Gowell, 1987-91	1260	1. Tina Berg, 1987-90	378	5. Leanne Schuster, 1991-94	1284	11. Christy Nore, 1985-88	103
9. Terri Cox, 1994-97	1185	2. Sue Nord, 1986-89	305	6. Christine Garner, 1992-95	1253	12. Kelly Plaisted, 1987-90	99
10. Sue Nord, 1986-89	1077	3. Tammy Webb, 1983-86	296	7. Nancy Christian, 1990-93	1221	13. Amanda Burbridge, 1997-2000	98
11. Tracey Barberie, 1984-87	1032	4. Debbie Penney, 1988-91	276	8. Kelly Plaisted, 1987-90	1194	14. Suzy Boggess, 1981-84	89
<b>Assists</b>		5. Nancy Christian, 1990-93	272	9. Tammy Webb, 1983-86	1178	15. Sue Nord, 1986-89	85
1. Regina Stahl, 1984-87	5180	6. Laura Hibsman, 1996-99	259	10. Tracey Barberie, 1984-87	1104	16. Tracie Kiero, 1986-89	81
2. Cheryl Anglin, 2000-P	3560	7. Kirstin Mattson, 1993-97	258	11. Amanda Burbridge, 1997-2000	1060	17. Debbie Penney, 1988-91	74
3. Jennifer Helfrich, 1989-92	2956	8. Terri Edison, 1980-83	250	12. Noelle Fridrich, 1986-89	1050		
4. Noelle Fridrich, 1986-89	2731	9. Leanne Schuster, 1991-94	233	<b>Service Aces</b>			
5. Jolynn Faatulu, 1995-98	2730	10. Julia Leddy, 1999-2002	229	1. Regina Stahl, 1984-87	178		
6. Tiffannie Johnson-Gates, 90-94	2698	11. Michelle Mortensen, 1997-2000	214	2. Tracey Barberie, 1984-87	172		
7. Tracy Heflin, 1993-96	2238	12. Jamie Peck, 1996-99	210	3. Lisa Stuck, 1980-83	152		
		13. Amy Nelson, 1990-92	204	4. Christine Garner, 1992-95	145		
		14. Tracey Barberie, 1984-87	203				

<b>Kills</b>	<b>Block Solos</b>	426	Terri Cox, 1996
599 Amanda Burbridge, 2000	83 Tammy Webb, 1985	415	Amanda Burbridge, 2000
555 Mindy Gowell, 1990	74 Tracey Barberie, 1985	414	Christy Nore, 1986
523 Tammy Webb, 1985	74 Tina Berg, 1990	390	Jami Coughlin, 2001
497 Christy Nore, 1988	73 Amy Nelson, 1992	379	Leanne Schuster, 1993
495 Christine Garner, 1993	59 Tammy Webb, 1986	378	Christine Garner, 1993
489 Tammy Webb, 1986	49 Tammy Motyka, 1985	374	Christine Everett, 1992
477 Christine Garner, 1994	47 Tina Berg, 1989	367	Mindy Gowell, 1989
475 Christine Garner, 1992	47 Amy Nelson, 1991	361	Terri Cox, 1997
456 Amanda Burbridge, 1998	42 Sue Nord, 1986	361	Nancy Christian, 1993
441 Terri Cox, 1996	38 Tammy Webb, 1984	361	Nancy Christian, 1992
436 Christy Nore, 1986	38 Kirstin Mattson, 1994	357	Terri Cox, 1995
424 Christine Garner, 1995	<b>Block Assists</b>	357	Noelle Fridrich, 1989
420 Juliana Escobar, 2002	186 Tina Berg, 1990	355	Jami Coughlin, 1998
417 Terri Cox, 1997	129 Debbie Penney, 1990	353	Noelle Fridrich, 1988
413 Lisa Stuck, 1982	114 Tina Berg, 1989	345	Debbie Penney, 1989
412 Amanda Burbridge, 1999	111 Kirstin Mattson, 1997		<b>Service Aces</b>
404 Jami Coughlin, 2000	110 Nancy Christian, 1993	65	Regina Stahl, 1984
383 Lisa Stuck, 1983	108 Nancy Christian, 1990	63	Tracey Barberie, 1985
	101 Sue Nord, 1988	50	Regina Stahl, 1986
<b>Assists</b>	100 Amy Nelson, 1992	50	Tracie Kiso, 1988
1452 Cheryl Anglin, 2000	98 Michelle Mortensen, 2000	50	Juliana Escobar, 2002
1450 Regina Stahl, 1985	98 Terri Edison, 1983	48	Nancy Christian, 1992
1444 Noelle Fridrich, 1988	98 Dawn Meidinger, 1988	46	Christine Garner, 1993
1413 Regina Stahl, 1986	98 Shawna Vanley, 1998	46	Tammy Webb, 1984
1255 Regina Stahl, 1987	91 Sue Nord, 1989	45	Lisa Stuck, 1982
1250 Jennifer Helfrich, 1992	87 Christine Everett, 1992	44	Valentina Vega, 1982
1228 Jolynn Faatulu, 1998	87 Annette Monsen, 1995	44	Tammy Webb, 1986
1182 Jennifer Helfrich, 1990	84 Tammy Webb, 1985	44	Nancy Christian, 1990
1122 Tracy Heflin, 1996		41	Amanda Burbridge, 2000
1114 Cheryl Anglin, 2001	<b>Digs</b>		
1098 Tiffannie Johnson, 1994	601 Mindy Gowell, 1990		
1086 Noelle Fridrich, 1989	556 Christy Nore, 1988		
1062 Regina Stahl, 1984	538 Kelly Plaisted, 1990		
1059 Becky Sidoti, 1999	465 Tammy Webb, 1986		
	464 Jami Coughlin, 2000		
	436 Tracey Barberie, 1986		



*All-American and ASU 30th Anniversary team member Regina Stahl (1984-87) holds the ASU career record for assists with 5,180.*



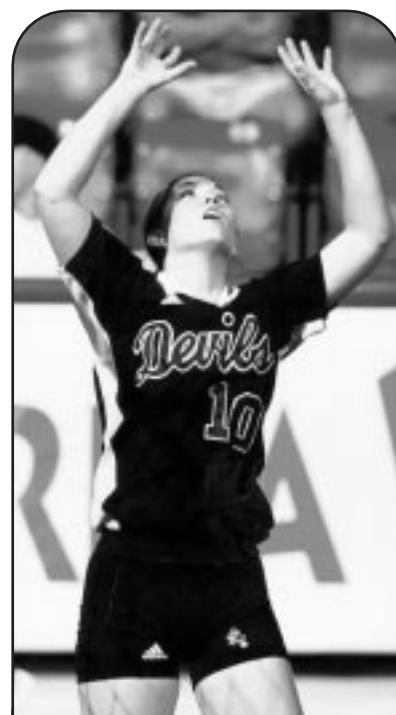
# ASU Records

## ASU National Leaders

2000 Amanda Burbridge, 8th kills average (5.55)	Mindy Gowell, 10th dig average (4.39).	average (13.52); Team, 16th dig average (17.87).
Jami Coughlin, 30th digs average (4.00)	1988: Christy Nore, 1st dig average (4.92);	1985: Regina Stahl, 3rd assist percentage (.487);
Team, 17th digs average (18.89)	Christy Nore, 16th kill average (4.40);	Regina Stahl, 5th assist average (12.61);
Team, 22nd kills average (17.17)	Noelle Fridrich, 15th assist average (12.24).	Tammy Webb, 9th kill average (4.51);
1996: Terri Cox, 11th kills average (5.07);	1987: Regina Stahl, 13th assist average (11.73);	Tammy Webb, 20th hitting percentage (.353);
Terri Cox, 2nd digs average (4.90);	Team, 16th kill average (15.05); Team,	Team, assist average (14.29); Team,
Team, 10th digs average (19.17)	18th assist average (12.99).	7th assist percentage (.462); Team,
1994: Christine Garner, 24th kills average (4.68)	1986: Tammy Webb, 15th kill average (3.81);	9th kill average (15.70); Team, 14th hitting
1993: Christine Garner, 6th kills average (4.71);	Regina Stahl, 15th assist average (13.52);	percentage (.262); Team, 18th block
Team, 8th digs average (20.12)	Team, 7th kill average (15.91); Team, 8th	average (3.87).
1990: Tina Berg, 5th block average (1.91);	hitting percentage (.278); Team, 12th assists	

## ASU Postseason History

2002: NCAA Regional (1st-2nd Round), Lincoln, Neb.	1990: Women's Invitational Volleyball Championship,
Arizona State def. Cincinnati, 3-2	Knoxville, Tenn.
Nebraska def. Arizona State, 3-0	Arizona State def. Dayton, 3-0; Arizona State
2000: NCAA Regional (1st Round), Minneapolis, Minn.	def. William & Mary, 3-0;
Arizona State def. Duke, 3-1	Loyola Marymount def. Arizona State, 3-2;
Minnesota def. Arizona State 3-1	Memphis State def. Arizona State, 3-2.
1999: NCAA Regional (1st Round), Provo, Utah	1988: NCAA West Regional, Seattle, Wash.
Wisconsin def. Arizona State, 0-3	Washington def. Arizona State, 3-0.
1995: NCAA Regional (2nd Round), Tempe, Ariz.	1987: NCAA South Regional, Arlington, Tex.
Arizona State def. UC Santa Barbara, 3-2	Texas-Arlington def. Arizona State, 3-0.
NCAA Regional (Semifinal), Honolulu, Hi.	1986: NCAA West Regional, Tempe, Ariz. and Provo, Utah
Hawaii def. Arizona State, 3-1	Arizona State def. Pepperdine, 3-0;
1994: NCAA Regional (2nd Round), Tempe, Ariz.	Brigham Young def. Arizona State, 3-1.
Arizona State def. San Diego State, 3-2	1985: NCAA West Regional, Tucson, Ariz.
NCAA Regional (Semifinal), Stanford, Calif.	Arizona def. Arizona State, 3-1.
Stanford def. Arizona State, 3-0	1983: NCAA West Regional, Provo, Utah
1993: NCAA Regional (2nd Round), Tempe, Ariz.	Brigham Young def. Arizona State, 3-0.
Arizona def. Arizona State, 3-2	1982: NCAA Northwest Regional, Tempe, Ariz. and San
1992: NCAA Regional (1st Round), Albuquerque, NM	Luis Obispo, Calif.
Arizona State def. New Mexico, 3-2	Arizona State def. Illinois State, 3-1;
NCAA Regional (2nd Round), Los Angeles, Calif.	Cal Poly San Luis Obispo def. Arizona State, 3-1.
UCLA def. Arizona State 3-0	1981: NCAA Southeast Regional, Tuscaloosa, Ala.
	Stanford def. Arizona State, 3-0.



Senior setter Cheryl Anglin rewrote the freshman record books for a setter, recording 1,452 assists in 2000 and a freshman record of 84 vs. Washington State.

## ASU Freshman Volleyball Records

Kills, Match: 27, Valentina Vega vs. Cal Poly SLO, 12/10/82	Block Solos, Season: 42, Sue Nord, 1986
Kills, Season: 475, Christine Garner, 1992	Block Assists, Match: 10, Nancy Christian vs. Arizona, 9/13/90
Digs, Match: 25, Jami Coughlin vs. Bradley, 9/11/98	Block Assists, Season: 83, Laura Hibbsman, 1996
Digs, Season: 355, Jami Coughlin, 1998	Assists, Match: 84, Cheryl Anglin, vs. Washington State, 10/20/00
Block Solos, Match: 8, Sue Nord vs. Wyoming, 9/26/86	Assists, Season: 1,452, Cheryl Anglin (2000)
8, Tina Berg vs. U.S. International, 10/22/87	Aces, Match: 9, Regina Stahl vs. New Mexico, 9/7/84
	Aces, Season: 65, Regina Stahl, 1984

# ASU Volleyball Legends



**Amanda Burbridge**  
All Pac-10 1999-2000  
AVCA 2nd Team All-American (2000)



**Nancy Corea**  
WCAA All-Conference (HM) 1980



**Terri Cox**  
All Pac-10 1996



**Christine Everett**  
All Pac-10 1992



**Heather Forbes**  
WCAA All-Conference 1982-83



**Noelle Fridrich**  
GTE  
Academic All-America (3rd team) 1988-89



**Christine Garner**  
AVCA All-America (2nd team) 1995  
All Pac-10 1993-95  
ASICS/Volleyball All-America (HM) 1993-94



**Mindy Gowell**  
GTE Academic All-America (2nd team) 1990-91  
(3rd team) 1991-92  
All Pac-10 1990



**Jennifer Helfrich**  
GTE  
Academic All-America (1st team) 1992-93



**Tracie Kisro**  
GTE  
Academic All-America (1st team) 1988-90



**Sheri Lobb**  
WCAA All-Conference (1st team) 1979



**Tammy Motyka**  
Pacific West All-Conference (HM) 1985



**Christy Nore**  
AVCA All-America (1st team) 1988  
All Pac-10 1988



**Joan Oakley**  
Intermountain All-Conference 1978



**Debbie Penney**  
All Pac-10 1991



**Danelle Richard**  
Intermountain All-Conference 1977



**Leanne Schuster**  
All Pac-10 1993



**Joanne Smith**  
Intermountain All-Conference 1977



**Jenn Snyder**  
All Pac-10 1995



**Regina Stahl**  
AVCA All-America (2nd team) 1986  
Four-Time All-Conference



**Lisa Stuck**  
USVBA All-America (HM)  
WCAA All-Conference 1980-83



**Valentina Vega**  
Pacific West All-Conference (HM) 1985  
WCAA All-Conference (2nd team) 1982



**Tammy Webb**  
1st Team AVCA All-America 1985-1986  
All-Pac-10 1986  
Pacific West All-Conference 1985



**Jami Coughlin**  
1st Team Verizon  
Academic All-American 2000, 2001

# Honor Roll



Christine Garner (1992-95) was a three-time All-Pac-10 selection as well as an AVCA All-American pick in 1995 for the Sun Devils.

## U.S. National Team

1988	Tammy Webb (Liley)
1992	Tammy Webb (Liley)
1996	Tammy Webb (Liley)/Christine Garner
1997	Christine Garner

## U.S. Jr. National and B Teams

1993	Christine Garner
------	------------------

## World University Games

1993	Christine Garner
------	------------------

## NCAA Post-Graduate Scholarship Winners

1993	Jennifer Helfrich
------	-------------------

## Academic All-Pac-10

2002	Julia Leddy (1st) Cheryl Anglin (2nd) Kim Mehlhorn (2nd)
2001	Fernanda Habiger (2nd) Jami Coughlin (1st)
2000	Julia Leddy (1st) Jami Coughlin (1st) Amanda Burbridge (2nd)
1999	Julia Leddy (2nd) Amanda Burbridge (1st), Jami Coughlin (1st), Laura Hibbsman (2nd), Robyn Mattingly (HM)
1998	Laura Hibbsman (HM)
1997	Laura Hibbsman (HM)
1995	Holly Sones (HM)
1994	Kathy Culbreath (1st), Monique Allen (2nd), Leanne Schuster (2nd)
1993	Kathy Culbreath (2nd), Leanne Schuster (2nd) Holly Sones (HM)
1992	Jennifer Helfrich (1st), Amy Nelson (1st)
1991	Mindy Gowell (1st), Jennifer Helfrich (1st),

1990	Debbie Penney (HM) Mindy Gowell (1st), Jennifer Helfrich (2nd), Kelly Plaisted (HM)
1989	Sue Nord (1st), Tracie Kisro (1st), Noelle Fridrich (1st)
1988	Sue Nord (1st), Dawn Meldinger (1st), Tracie Kisro (1st)
1987	Sue Nord (1st)

## Volleyball Monthly

### All-Freshman Team

1992	Christine Garner
------	------------------

## Professional Volleyball

1993	Christine Everett, France
1998	Christine Garner, Turkey/Italy
1999	Mattson, Austria
1999	Vanley, Austria
2001	Amanda Burbridge, Puerto Rico
2001	Michelle Mortensen, Austria

## Pro Beach Volleyball

1995-pres.	Leanne Schuster (McSorley), WPVA
1995	Nancy Christian, WPVA
1992-95	Mindy Gowell, WPVA

## Volleyball Magazine

### Fabulous 50 Selections

1997	Jami Coughlin
1996	Amanda Burbridge
1995	Jamie Peck
1994	Terri Cox, Jenn Snyder
1993	Tracy Heflin, Hilary Clark
1992	Christine Garner, Kelly Harris
1991	Leanne Schuster
1990	Tiffannie Johnson, Kathy Culbreath, Nancy Christian
1987	Mindy Gowell
1984	Regina Stahl-Mannix

## Gatorade High School Player of the Year

1999	Courtney Blocher (Arizona)
1998	Jami Coughlin (Arizona)
1997	Amanda Burbridge (Arizona)
1996	Laura Hibbsman (Arizona)

## High School All-American

1999	Courtney Blocher (Valley Christian HS, Ariz.)
1997	Jami Coughlin (Moon Valley HS, Ariz.)
1995	Jolynn Faatulu (Long Beach Poly HS, Calif.)
1994	Terri Cox (St. Anthony's, Calif.)
1994	Jenn Snyder (Independence HS, Ariz.)
1991	Tracy Heflin (Agoura Hills HS, Calif.)
1991	Kelly Harris (Snider HS, Ind.)
1987	Mindy Gowell (Portage HS, Kalamazoo, MI)
1987	Kathy Culbreath (Platte Valley HS, Colo.)
1987	Tiffannie Johnson (Tustin HS, Calif.)

## Olympic Festival/National Sports Festival

1995	Jenn Snyder (East)
1994	Christine Garner (South)
1991	Debbie Penney (West), Mindy Gowell (North)
1992	Leanne Schuster
1985-86	Regina Stahl-Mannix

## All-Region

2000	Amanda Burbridge
1995	Christine Garner
1994	Christine Garner
1993	Christine Garner, Leanne Schuster
1992	Christine Garner, Christine Everett
1991	Mindy Gowell, Debbie Penney
1990	Mindy Gowell
1988	Christy Nore, Noelle Fridrich
1986	Regina Stahl-Mannix
1985	Regina Stahl-Mannix

## AVCA All-Americans

2000	Amanda Burbridge (2nd Team)
1995	Christine Garner (2nd Team)
1988	Christy Nore (1st Team)
1986	Tammy Webb (1st Team)
1986	Regina Stahl (2nd Team)
1985	Tammy Webb (1st Team)
1983	Lisa Stuck (Honorable Mention)
1982	Lisa Stuck (Honorable Mention)

## Academic All-America

2001	Jami Coughlin (1st Team)
2000	Amanda Burbridge (3rd Team)
2000	Jami Coughlin (1st Team)
1992	Jennifer Helfrich (1st Team)
1991	Mindy Gowell (3rd Team)
1990	Mindy Gowell (2nd Team)
1989	Tracie Kisro (1st Team)
1988	Noelle Fridrich (3rd Team)
1988	Tracie Kisro (1st Team)



Former Sun Devil Tammy (Webb) Liley was co-captain of the US National Team that competed in the '96 Olympics.



# 2003 Opponents

## Arizona

Sept. 26 in Tempe • 7:00 p.m.  
Oct. 25 in Tucson • 7:00 p.m.

Location: Tucson, Ariz.  
Enrollment: 35,400  
Nickname: Wildcats  
Colors: Cardinal and Navy  
Conference: Pacific-10  
Arena: McKale Center (14,545)  
Athletic Director: Jim Livengood  
Volleyball SID: Matt Rector  
SID E-Mail: mjrector@u.arizona.edu  
SID Office Phone: (520) 621-0914  
SID Office Fax: (520) 621-2681  
SID Home Phone: (520) 327-2617  
Press Row Phone: (520) 621-5291  
Head Coach: David Rubio  
(Cal State Northridge, '82)  
Record at Arizona: 217-109 (11)  
Overall Record: 337-174 (16)  
Assoc. Head Coach: Charita Johnson  
Assistant Coach: Steve Walker  
2002 Record: 20-12  
2002 Pac-10 Record: 11-7 (t-3rd)  
Key Returnees:  
Kim Glass (OH, 6-2, So.)  
Be Ladd (MB, 6-1, So.)  
Shannon Torregrosa (OH, 6-2, Sr.)  
Series Record: ASU leads 34-30

## California

Oct. 3 in Tempe • 7:00 p.m.  
Nov. 1 in Berkeley • 7:00 p.m.

Location: Berkeley, Calif.  
Enrollment: 32,000  
Nickname: Golden Bears  
Colors: Blue and Gold  
Conference: Pacific-10  
Arena: Haas Pavilion (12,172)  
Athletic Director: Steve Gladstone  
Volleyball SID: Scott Ball  
SID E-Mail: sball@uclink4.berkeley.edu  
SID Office Phone: (510) 643-5363  
SID Office Fax: (510) 643-7778  
SID Home Phone: (510) 420-1142  
Press Row Phone: (510) 642-3098  
Head Coach: Rich Feller  
(San Diego State '73)  
Record at Cal: 56-60 (4)  
Overall Record: 355-227 (18)  
Assistant Coaches: Chris Bigelow  
Lee Macs  
2002 Record: 20-12  
2002 Pac-10 Record: 7-11 (8th)  
Key Returnees:  
Mia Jerkov (OH, 6-3, Jr.)  
Jenna Brown (OH, 5-11, So.)  
Camille Leffall (MH, 6-0, Jr.)  
Series Record: ASU leads 28-10

## Chattanooga

SMU Radisson Invitational  
Sept. 12 in Dallas, Texas • 4:30 p.m.

Location: Chattanooga, Tenn.  
Enrollment: 8,485  
Nickname: Lady Mocs  
Colors: Navy and Old Gold  
Conference: Southern  
Arena: MacLellan Gym (4,177)  
Athletics Director: Steve Sloan  
Volleyball SID: Don Harris  
SID E-Mail: Don-Harris@utc.edu  
SID Office Phone: (423) 425-4618  
SID Office Fax: (423) 425-4610  
SID Home Phone: (423) 843-0758  
Press Row Phone: N/A  
Head Coach: Lisa Rhodes  
(Appalachian State '83)  
Record at UTC: 159-147 (9)  
Overall Record: 256-226 (14)  
Assistant Coaches: James "J.O." Onikeku  
2002 Record: 10-21  
2002 Southern Record: 6-14 (8th)  
Key Returnees:  
Kari Krouse (OH, 5-8, Sr.)  
Kindsey Galloway (LI, 5-9, So.)  
Jody Steinberger (OH, 6-1, Sr.)  
Series Record: First Meeting

## Gonzaga

Nevada Volleyball Classic  
Sept. 5 in Reno, Nev. • 4:30 p.m.

Location: Spokane, Wash.  
Enrollment: 5,206  
Nickname: Bulldogs/Zags  
Colors: Blue, white and red  
Conference: West Coast  
Arena: Martin Center (4,000)  
Athletics Director: Mike Roth  
Volleyball SID: Rich Moser  
SID E-Mail: moser@athleticsgonzaga.edu  
SID Office Phone: (509) 323-5484  
SID Office Fax: (509) 323-5730  
SID Home Phone: N/A  
Press Row Phone: (509) 323-4224  
Head Coach: Kip Yoshimura  
(Long Beach State '90)  
Record at GU: 4-24 (1)  
Overall Record: 255-96 (10)  
Assistant Coaches: Jerry Pruitt  
Kari St. Martin  
2002 Record: 4-24  
2002 WCC Record: 2-12 (t-7th)  
Key Returnees:  
Jamie VanMeetren (OH, 5-11, Sr.)  
Abby Cullen (MB, 6-2, Sr.)  
Christina Davis (OH, 5-11, Jr.)  
Series Record: First Meeting

## Ohio

Sun Devil Volleyball Classic  
Aug. 30 in Tempe • 12 p.m.

Location: Athens, Ohio  
Enrollment: 28,197  
Nickname: Bobcats  
Colors: Hunter Green and White  
Conference: Mid American  
Arena: Convocation Center (13,168)  
Athletics Director: Thomas Boeh  
Volleyball SID: P.J. Gradowski  
SID E-Mail: sports.media@ohio.edu  
SID Office Phone: (740) 593-0054  
SID Office Fax: (740) 597-1838  
SID Home Phone: N/A  
Press Row Phone: N/A  
Head Coach: Geoff Carlston  
(Minnesota '93)  
Record at OU: 0-0  
Overall Record: 49-42  
Assistant Coaches: Anna Borica  
Leah Mercer  
2002 Record: 25-9  
2001 Mid-Am Record: 14-4 (2nd)  
Key Returnees:  
Laura Hageman (MB, 6-2, Sr.)  
Holly Schetzle (OH, 6-2, Jr.)  
Briana Adamovsky (S, 5-6, Jr.)  
Series Record: First Meeting

## Oregon

Oct. 17 in Tempe • 7:00 p.m.  
Nov. 14 in Eugene • 7:00 p.m.

Location: Eugene, Ore.  
Enrollment: 20,044  
Nickname: Ducks  
Colors: Green and Yellow  
Conference: Pacific-10  
Arena: McArthur Court (9,087)  
Athletic Director: Bill Moos  
Sports Info. Contact: Allison Ross  
Volleyball SID: aross@gladstoneoregon.edu  
SID Office Phone: (541) 346-0962  
SID Office Fax: (541) 346-5449  
SID Home Phone: (541) 520-8181  
Press Row Phone: (541) 346-4497  
Head Coach: Carl Ferreira  
(Fresno State '93)  
Record at Oregon: 30-62 (3)  
Overall Record: 178-118 (9)  
Assistant Coaches: Keith Rubio  
Rhonda Rust  
2002 Record: 11-21  
2002 Pac-10 Record: 1-17 (10th)  
Key Returnees:  
Katie O'Neil (LI, 5-10, Jr.)  
Kelly Russell (OH, 6-1, So.)  
Lauren Westendorf (OH, 6-0, Jr.)  
Series Record: ASU leads 27-7

## Oregon State

Oct. 18 in Tempe • 7:00 p.m.  
Nov. 13 in Corvallis • 7:00 p.m.

Location: Corvallis, Ore.  
Enrollment: 19,000  
Nickname: Beavers  
Colors: Orange and Black  
Conference: Pacific-10  
Arena: Gill Coliseum (10,400)  
Athletics Director: Bob De Carolis  
Sports Info. Contact: Jennifer Lowery  
SID E-Mail: jennifer.lowery@orst.edu  
SID Office Phone: (541) 737-3720  
SID Office Fax: (541) 737-3072  
SID Home Phone: (541) 758-8528  
Press Row Phone: (541) 737-3020  
Head Coach: Nancy Somera  
(USC '89)  
Record at OSU: 49-66 (4)  
Overall Record: Same  
Assistant Coaches: Michael Seemann  
Ben Somera  
2002 Record: 8-20  
2002 Pac-10 Record: 2-16 (9th)  
Key Returnees:  
Laura Collins (S, 5-10, Sr.)  
Allison Lawrence (OH, 5-10, Jr.)  
Karah Rhoades (OH, 5-9, So.)  
Series Record: ASU leads 25-10

## Nevada

Nevada Volleyball Classic  
Sept. 6 in Reno, Nev. • 7:00 p.m.

Location: Reno, Nev.  
Enrollment: 15,300  
Nickname: Wolf Pack  
Colors: Navy Blue and Silver  
Conference: WAC  
Arena: Virginia Street Gym (1,800)  
Athletics Director: Chris Ault  
Volleyball SID: Jack Kuestermeyer  
SID E-Mail: jkuester@unr.edu  
SID Office Phone: (775) 784-6900  
SID Office Fax: (775) 784-4386  
SID Home Phone: (775) 787-0325  
Press Row Phone: (775) 327-5132  
Head Coach: Devin Scruggs  
(Pacific '91)  
Record at UNR: 103-69 (6)  
Overall Record: Same  
Assistant Coaches: Oscar Crespo  
Juliet Klemm  
2002 Record: 22-10  
2002 WAC Record: 8-5 (3rd)  
Key Returnees:  
Kellie Burton (MB, 6-2, Jr.)  
Salaia Salavea (MB, 6-0, So.)  
Christine Harms (OH, 5-8, SO)  
Series Record: ASU leads 3-1

# 2003 Opponentnets

## San Diego

Sun Devil Volleyball Classic  
Aug. 30 in Tempe • 7:00 p.m.

Location: San Diego, Calif.  
Enrollment: 7,043  
Nickname: Toreros  
Colors: Blue, Navy, White  
Conference: West Coast  
Arena: Jenny Craig Pavilion  
Athletics Director: Tom Iannacone  
Volleyball SID: Nick Mirkovich  
SID E-Mail: nmirk@sandiego.edu  
SID Office Phone: (619) 260-4745  
SID Office Fax: (619) 260-2990  
SID Home Phone: N/A  
Press Row Phone: (619) 260-7555  
Head Coach: Jennifer Petrie  
(William & Mary '92)  
Record at USD: 84-37 (4)  
Overall Record: Same  
Assistant Coaches: Brent Hilliard  
Tammy Liebl  
2002 Record: 25-8  
2002 WCC Record: 10-4 (3rd)  
Key Returnees:  
Lindsey Sherburne (S, 5-9, So.)  
Devon Foster (OH, 6-1, Jr.)  
Kristen Hurst (RS, 6-0, Jr.)  
Series Record: ASU leads 6-0

## SMU

SMU Radisson Invitational  
Sept. 13 in Dallas, Texas • 7:00 p.m.

Location: Dallas, Texas  
Enrollment: 10,038  
Nickname: Mustangs  
Colors: Red and Blue  
Conference: WAC  
Arena: Moody Coliseum (8,998)  
Athletics Director: Jim Copeland  
Volleyball SID: TBA  
SID E-Mail: TBA  
SID Office Phone: (214) 768-3735  
SID Office Fax: (214) 768-2044  
SID Home Phone: TBA  
Press Row Phone: N/A  
Head Coach: Lisa Seifert  
(Winona State '83)  
Record at SMU: 96-120 (6)  
Overall Record: Same  
Assistant Coaches: Cristine Dixon  
Sean Kuracofe  
2002 Record: 12-17  
2002 WAC Record: 6-7 (3rd - East)  
Key Returnees:  
Allison Holder (OH, 6-2, Sr.)  
Beth Karasek (OH, 6-1, Jr.)  
Jackie Erasmus (S, 5-9, Jr.)  
Series Record: First Meeting

## Stanford

Oct. 2 in Tempe • 7:00 p.m.  
Oct. 31 in Stanford • 7:00 p.m.

Location: Stanford, Calif.  
Enrollment: 13,811  
Nickname: Cardinal  
Colors: Cardinal and White  
Conference: Pacific-10  
Arena: Maples Pavilion (7,500)  
Athletic Director: Dr. Ted Leland  
Volleyball SID: Aimee Dombroski  
SID E-Mail: aimeed@stanford.edu  
SID Office Phone: (650) 723-4418  
SID Office Fax: (650) 725-2857  
SID Home Phone: (650) 573-9090  
Press Row Phone: (650) 723-4418  
Head Coach: John Dunning  
(San Diego State '73)  
Record at Stanford: 65-7 (2)  
Overall Record: 502-109 (18)  
Assistant Coaches: Denise Corlett  
Katy Ripp  
2002 Record: 32-5  
2002 Pac-10 Record: 15-3 (2nd)  
Key Returnees:  
Ogonna Nnamani (OH, 6-1, Jr.)  
Sara McGee (MB, 6-3, Sr.)  
Jenn Harvey (MB, 6-5, Sr.)  
Series Record: Stanford leads 41-4

## Stephen F. Austin

SMU Radisson Invitational  
Sept. 13 in Dallas, Texas • 4:30 p.m.

Location: Nacogdoches, Texas  
Enrollment: 11,500  
Nickname: Ladyjacks  
Colors: Purple and White  
Conference: Southland  
Arena: Johnson Arena (7,203)  
Athletic Director: Steve McCarty  
Volleyball SID: James Dixon  
SID E-Mail: jdixon@sfasu.edu  
SID Office Phone: (936) 468-4150  
SID Office Fax: (936) 468-4593  
SID Home Phone: (936) 715-0393  
Press Row Phone: N/A  
Head Coach: Debbie Humphreys  
(Texas Tech '86)  
Record at SFA: 333-175 (15)  
Overall Record: Same  
Assistant Coach: Justin Gilbert  
2002 Record: 22-12  
2002 Southland Record: 14-6 (3rd)  
Key Returnees:  
Joanna Benestante (OH, 5-10, Jr.)  
Brittany Burton (MB, 5-10, Jr.)  
Julie Goodson (OH, 5-9, Sr.)  
Series Record: ASU leads 2-0

## Tennessee

Nevada Volleyball Classic  
Sept. 6 in Reno, Nev. • 10:00 a.m.

Location: Knoxville, Tenn.  
Enrollment: 25,501  
Nickname: Lady Vols  
Colors: Orange and White  
Conference: SEC East  
Arena: Stokely Athletics Center  
Athletic Director: Jan Cronan  
Volleyball SID: Adam Love  
E-Mail: alove1@utk.edu  
SID Office Phone: (865) 974-8876  
SID Office Fax: (865) 974-8875  
SID Home Phone: (865) 207-4901  
Press Row Phone: N/A  
Head Coach: Rob Patrick  
(Miami (Ohio))  
Record at Tenn: 112-74 (6)  
Overall Record: Same  
Assistant Coaches: Mike Minnis  
Cindy Young  
2002 Record: 20-11  
2002 SEC Record: 8-8 (4th - East)  
Key Returnees:  
Kristen Andre (MB, 6-1, So.)  
Jasmine Fullove (OH/L, 6-0, So.)  
Whitney Gifford (OH/MB, 6-0, Jr.)  
Series Record: ASU Leads 2-1

## UCLA

Oct. 11 in Los Angeles • 7:00 p.m.  
Nov. 7 in Tempe • 7:00 p.m.

Location: Los Angeles, Calif.  
Enrollment: 36,890  
Nickname: Bruins  
Colors: Blue and Gold  
Conference: Pacific-10  
Arena: Pauley Pavilion (12,800)  
Athletic Director: Dan Guerrero  
Volleyball SID: Amy Symons Hughes  
SID E-Mail: aasymond@ucla.edu  
SID Office Phone: (310) 206-8123  
SID Office Fax: (310) 825-8664  
SID Home Phone: (310) 376-0144  
Press Row Phone: (310) 825-1899  
Head Coach: Andy Banachowski  
(UCLA '68)  
Record at UCLA: 939-235 (36)  
Overall Record: Same  
Assistant Coaches: Kim Jagd  
Dave Fleming  
2002 Record: 20-14  
2002 Pac-10 Record: 9-9 (t-5th)  
Key Returnees:  
Brittany Ringel (OH, 6-1, Jr.)  
Cira Wright (MB, 6-0, Sr.)  
Chrissie Zartman (LI/5-5, Jr.)  
Series Record: UCLA leads 48-6

## USC

Oct. 10 in Los Angeles • 7:00 p.m.  
Nov. 8 in Tempe • 7:00 p.m.

Location: Los Angeles, Calif.  
Enrollment: 28,600  
Nickname: Women of Troy  
Colors: Cardinal and Gold  
Conference: Pacific-10  
Arena: Lyon Center (1,200)  
Athletic Director: Mike Garrett  
Volleyball SID: Vicky Hammond  
SID E-Mail: vhammond@usc.edu  
SID Office Phone: (213) 725-3576  
SID Office Fax: (213) 740-3226  
SID Home Phone: (310) 574-3226  
Press Row Phone: (213) 746-4859  
Head Coach: Mick Haley  
(Ball State '65)  
Record at USC: 56-5 (2)  
Overall Record: 829-193-1 (26)  
Assistant Coaches: Paula Weishoff  
Rob Machan  
2002 Record: 31-1  
2002 Pac-10 Record: 17-1 (1st)  
Key Returnees:  
April Ross (OH, 6-1, Sr.)  
Keao Burdine (OH, 6-1, Jr.)  
Katie Olsovsky (MB, 6-3, Sr.)  
Series Record: USC leads 41-10

## Utah

Sun Devil Volleyball Classic  
Aug. 29 in Tempe • 7:00 p.m.

Location: Salt Lake City, Utah  
Enrollment: 28,300  
Nickname: Utes  
Colors: Crimson and White  
Conference: Mountain West  
Arena: Crimmon Court (1,500)  
Athletic Director: Dr. Chris Hill  
Volleyball SID: Hope Wagner  
E-Mail: hwagner@huntsman.utah.edu  
SID Office Phone: (801) 581-3771  
SID Office Fax: (801) 581-4358  
SID Home Phone: (801) 533-5737  
Press Row Phone: (801) 585-9560  
Head Coach: Beth Launier  
(Aquinas '85)  
Record at UU: 253-162 (13)  
Overall Record: Same  
Assistant Coaches: Matt McShane  
Jason Smith  
2002 Record: 25-9  
2002 MWC Record: 10-4 (3rd)  
Key Returnees:  
Kelsie Kartchner (S, 5-10, Jr.)  
Jackie Morrill (LI/ 5-9, Sr.)  
Kim Turner (MB, 6-2, Sr.)  
Series Record: ASU leads 7-1

# All-Time Series Records

## Washington

Sept. 18 in Seattle • 7:00 p.m.  
Nov. 22 in Tempe • 7:00 p.m.

Location: Seattle, Wash.  
Enrollment: 37,000  
Nickname: Huskies  
Colors: Purple and Gold  
Conference: Pac-10  
Arena: Bank of America Arena  
Athletic Director: Barbara Hedges  
Volleyball SID: Misty Cole  
SID E-Mail: mistyrc@u.washington.edu  
SID Office Phone: (206) 543-2230  
SID Office Fax: (206) 543-5000  
SID Home Phone: (206) 349-3119  
Press Row Phone: (206) 616-8845  
Head Coach: Jim McLaughlin  
(UCSB '85)  
Record at UW: 31-27 (2)  
Overall Record: 255-145 (13)  
Assistant Coaches: Pat Stangle  
Leslie Tuiasosopo  
2002 Record: 20-11  
2002 Pac-10 Record: 9-9 (5th)  
Key Returnees:  
Sanja Tomasevic (OH, 6-1, Jr.)  
Kara Bjorkland (OH, 5-11, Sr.)  
Kaitlin Leck (OH, 6-1, Jr.)  
Series Record: UW leads 20-18

## Washington State

Sept. 19 in Pullman • 7:00 p.m.  
Nov. 21 in Tempe • 5:00 p.m.

Location: Pullman, Wash.  
Enrollment: 22,000  
Nickname: Cougars  
Colors: Crimson and Gray  
Conference: Pacific-10  
Arena: Bohler Gym (3,000)  
Athletic Director: Jim Sterk  
Volleyball SID: Linda Chulich  
SID E-Mail: lindak@wsu.edu  
SID Office Phone: (509) 335-0268  
SID Office Fax: (509) 335-0267  
SID Home Phone: (509) 334-2921  
Press Row Phone: (509) 335-0268  
Head Coach: Cindy Fredrick  
(Augustana College '74)  
Record at WSU: 269-175 (14)  
Overall Record: 355-232 (18)  
Assistant Coaches: Jennifer Greeny  
Dr. Mashallah Farokhmanesh  
2002 Record: 24-8  
2002 Pac-10 Record: 11-7 (t-3rd)  
Key Players:  
Brenn Larson (S, 5-11, So.)  
Zanda Bautre (OH, 5-9, Sr.)  
Jennifer Todd (MB, 6-3, Fr.)  
Series Record: ASU leads 18-17



## All-Time Series Records (1976-2002)

Arizona	34-30	George Washington	4-0	Northern Colorado	3-0	Texas	0-3
Arkansas	0-1	Georgia Tech	2-0	Northern Iowa	2-0	Texas A&M	4-0
Arkansas State	1-0	Grand Canyon	6-0	Northwestern	0-1	Texas-Arlington	0-3
Baylor	1-1	Hawaii	1-6-1	Notre Dame	3-0	Texas-El Paso	6-0
Boise State	1-0	Hofstra	4-0	Ohio State	1-0	Texas Tech	5-1
Bowling Green	1-0	Houston	1-1	Oral Roberts	2-0-1	U.S. International	4-0
Bradley	0-1	Illinois	0-1	Oregon	27-7	UC Irvine	2-0
Brigham Young	4-15	Illinois State	2-0	Oregon State	25-10	UC Riverside	2-0
California	27-11	Indiana	3-0	Pacific	1-5	UC Santa Barbara	1-10
Cal Poly	2-2	Iowa	2-0	Pepperdine	3-4	UCLA	6-48
Cal State Dominguez Hills	2-0	IUPUI	1-0	Pittsburgh	0-1	UNLV	2-1
Cal State Fullerton	14-2	Kentucky	1-2	Portland State	2-1	Utah	7-1
Cal State Northridge	3-2	Lamar	2-0	Providence	1-0	Utah State	4-3
Cal State Sacramento	3-0	Long Beach State	7-5	Rice	1-0	Virginia Tech	1-0
Cal State Stanislaus	1-0	Louisiana State	2-2	San Diego	6-0	Washington	18-20
Central Florida	1-0	Louisville	1-0	San Diego State	6-13	Washington State	18-17
Cincinnati	1-0	Loyola Marymount	3-4	San Jose State	1-1	Weber State	8-0
Clemson	1-0	Maryland	1-0	Santa Clara	2-2	West Virginia	1-0
Colorado	1-0	Memphis State	0-1	South Carolina	1-2	Western Illinois	1-0
Colorado State	10-0	Michigan	1-0	South Florida	1-0	Western Michigan	2-0
Connecticut	1-0	Minnesota	1-1	Southern California	10-41	Wichita State	1-0
Creighton	1-0	Montana State	4-0	Southwest Texas	2-0	Wisconsin	0-1
Dayton	1-0	Nebraska	1-3	St. Mary's College	2-0	William & Mary	1-0
Duke	1-0	Nevada	3-1	St. Xavier	1-0	Wright State	1-0
Eastern Illinois	1-0	New Mexico	15-0	Stephen F. Austin	2-0	Wyoming	6-2
Eastern Michigan	1-0	New Mexico State	10-3	Stanford	4-41		
Florida State	1-0	North Texas State	3-0	Syracuse	1-0		
Fresno State	2-0	Northern Arizona	38-5	Tennessee	2-1		



# President/Athletic Director



**Michael Crow**

Michael Crow became Arizona State University's 16th president on July 1, 2002. At ASU, Crow is focused on building a new type of American University, one that is directly engaged in the economic and social success of its region. In addition, the University will pursue unique research and creative excellence focused on the large intellectual questions central to the building of a sustainable and globally correct environment and economy Arizona.

Crow came to ASU from Columbia University where he was executive vice provost and professor of science policy in the School of International and Public Affairs.

Crow oversaw Columbia's research enterprise, technology and innovation transfer operations, the strategic initiative program, interdisciplinary program development, international initiatives and the university's Internet strategy and initiative.

He was executive chair of Columbia Innovation

Enterprises, Columbia's highly successful innovation transfer arm that earned more than \$170 million in license and research revenue in 2001; Digital Knowledge Ventures, which focuses on strategic development in digital media; an Columbia Earth Institute, which serves as a catalyst for cooperation in understanding the earth and the complexity of our relationship with it.

Crow also is founder and chair of the Center for Science, Policy & Outcomes in Washington, D.C., and the Biosphere 2 Center in Oracle.

Prior to moving to Columbia in 1991, Crow was Institute Professor of Technology Management and director of the Institute for Physical Research and Technology at Iowa State University.

He is the author of many articles and author or editor of several books relating to the analysis of research organizations, technology transfer, strategic research and development management, research universities, science and technology policy, and the practice and theory of public policy.

Since the early 1980s, Crow has focused his intellectual energy on understanding, designing and building knowledge organizations. He has been involved in the development of more than 50 university teach and

or research centers or institutes, several as lead "architect."

In addition, Crow has field studied and evaluated the structure, environment and effectiveness of more than 900 knowledge organizations in more than 15 countries. He also has been involved in the design and development of three university research parks, 30 technology based start-up companies and national science and technology strategies for the U.S., Sweden, Taiwan, Poland, Russia and Canada.

Crow also has served as a trustee of Bowdoin College in Brunswick, Maine.

Crow has been a consultant for ASU for the past ten years, with direct involvement in planning the university's strategic research agenda.

Crow holds a B.A. in Political Science and Environmental Studies from Iowa State University of Science and Technology and a Ph.D. in Public Administration (Science and Technology Policy) from the Maxwell School at Syracuse University.



**Gene Smith**

Gene Smith was appointed as Arizona State University's 18th director of athletics on July 27, 2000. Smith arrived at ASU as no stranger to collegiate athletics, serving as athletics director at Iowa State University for seven years prior to coming to ASU. Smith was also previously the athletics director at Eastern Michigan University (1986-93).

In his three years at Arizona State, Smith hit the ground running, starting his own legacy of success in Tempe. He has hired nationally regarded coaches in football, soccer, wrestling, women's golf, water polo and volleyball while overseeing each of ASU's 22-sports programs, many of which saw unprecedented competitive success the past three years. Smith also helped to finish a \$30 million capital campaign, which in part is funding the construction of the \$19 million Ed and Nadine Carson Student-Athlete Center, completed in May, 2002. The state-of-the-art facility affords ASU one of the finest student-athlete centers in the country, including perhaps the premier weight room and sports rehabilitation area in the nation.

In his first three years at ASU, Smith, who was named the 2003 Division I West Region Athletics Director of the Year by the National Association of Collegiate Directors of Athletics, has created a winning environment, dedicated to building stronger programs and committed to providing student-athletes the opportunity to be successful academically, athletically and socially. With 341 of 470 student-athletes earning a 3.0 GPA or higher (Fall '02), and a major leap in student-athlete graduation rates, the Sun Devils also continued to excel on the fields of play. In addition, ASU produced its first two individual national champions since 1996: Eric Larkin in

wrestling and Joona Puhakka in diving. Significant competitive achievement has been realized in every Olympic sport and ASU earned a No. 10 ranking in the annual NACDA Athletics Cup (formerly Sears Cup).

While at Iowa State, Smith engineered exceptional financial and competitive performance that propelled the Cyclone athletic department to the forefront of the Big 12 Conference and diligently prepared it for the 21st century. Promising to make Iowa State "one of the premier athletic programs in the nation," Gene Smith began his tenure as Iowa State's 12th athletics director on July 1, 1993. Smith is a past president of the National Association of Collegiate Directors of Athletics (NACDA) who oversaw an athletic department transformation during his tenure in Ames. The construction of new facilities, record-breaking fund raising, exemplary athletic-academic achievement and the recruitment of staff whose performance has affirmed his choices underscore Smith's legacy at Iowa State. ISU's student-athletes were community leaders, participating in a variety of local and regional initiatives that demonstrate the athletics department's proactive outreach under Smith's leadership.

Smith's strong reputation among his peers was affirmed in June 1994 when the Notre Dame graduate was named president of NACDA. In 1991, Smith was appointed to a four-year term on NACDA's 32-member executive committee. In 1992, he was elected third vice president of the organization and was named to the Division I-A Executive Committee. He was elected first vice president of NACDA in 1993. Smith has also served on the NCAA President's Commission Liaison Committee, the NCAA Executive Committee, the NCAA Men's Basketball Committee and the NCAA Working Committee to Study Basketball Issues. He was appointed to the NCAA's Management Council in May of 1996 and continues to serve on that committee. He is also a member of the NCAA Infractions Committee.

In addition, Smith is a member of the Fiesta Bowl Board in Tempe as well as a number of Pacific-10

Conference committees. He serves as the vice president of the Pac-10 Executive Committee and the chair of the Pac-10 Football Officiating Committee and is a member of the Pac-10 Selection, Athletics Directors' Revenue Sharing, Rose Bowl Management and Bowl (Ad Hoc) committees. He is a member of the Honors Court of the National Football Foundation and College Football Hall of Fame, the NCAA Infractions Committee, the NCAA Football Rules Committee, the NCAA Administrative Review Committee and the BCS Athletic Director's Advisory Committee.

Prior to his arrival at Iowa State, Smith served as athletic director at Eastern Michigan University for seven years. Smith joined the EMU staff in 1983 as assistant athletic director for non-revenue sports. He was named interim executive athletic director in 1985 and was elevated to the position permanently on June 25, 1986.

Smith earned a bachelor's degree in business administration from the University of Notre Dame in 1977. He earned three varsity football letters as a defensive end at Notre Dame and was a member of the Associated Press 1973 national championship team.

Smith also served as an assistant football coach at Notre Dame from 1977-81, helping the squad to its 1977 undisputed national championship. He then spent two years as a marketing representative for IBM prior to joining the Eastern Michigan staff in April 1983.

A native of Cleveland, Ohio, Smith earned eight letters in football, basketball and track while attending Chanel High School and was the football squad's MVP as a senior. Smith, who was born Dec. 18, 1955, has three daughters:

Gene and his wife, Sheila, have four children: Matt, Nicole, Lindsey and Summer, and two grandchildren: Marshall and Steele. Sheila, a 1976 Canadian Olympian, holds a doctorate in Higher Education Administration and currently serves as Senior Vice President for the ASU Foundation.

# SUN ANGEL FOUNDATION

**T**he Sun Angel Foundation is a support group that has served Arizona State University since 1947. It was officially incorporated as a non-profit agency for the purpose of promoting Sun Devil athletic programs and recently came under the direction of Arizona State's intercollegiate athletics department.

The Foundation seeks to join the energy and resources of business leaders, ASU alumni and members of the Valley community with the goals and objectives of Arizona State University to benefit the community at large. Over the past 55

years, Sun Angels have contributed over \$70 million in private funding to ASU Athletics.

Annual contributions from Sun Angel members are the lifeblood of ASU Athletics. Contributions from more than 7,000 members support all of the university's 22 varsity teams and over 480 student-athletes.

The umbrella of the Sun Angel Foundation is large and includes specific clubs that strive to meet the needs of specific programs. The Wings of Gold (women's & Olympic sports), On Deck Circle (baseball) and Slam Dunk Club (basketball) are part of the Sun Angel Foundation and donations to the Sun Angel Foundation can be earmarked for specific programs and purposes.

The support Sun Devil athletics has received from its fans and community in the past is greatly appreciated. The Sun Angel Foundation stands ready to meet its half-century long goal of promoting excellence in both academic and athletic programs while becoming the best collegiate support group in the country. To join the team, call the Sun Angels today at 480-727-7700.



## 2003-2004 Sun Angel Board Members

Richard Barr	Steve Johnson
Jim Barrett	Wally Kelly
Fred Bengtson	Nap Lawrence
Patricia Boyd	Lydia Lee
Gentry	Steve Loy
Steve Butterfield	Steve Matlock
Martin Calfee	Bob Matthews,
Don Carson	Vice Chairman
Nadine Carson	Nathan Norris
Pep Cooney	Guthrie Packard
Eric Crown	Michael Polachek
Verde Dickey	Bill Post,
Gene Drake	Treasurer
Geoffrey Edmunds	Ed Robson
Mike Gallagher,	Bill Schaefer
Chairman	Cindy Slick
Greg Hancock	Phillippi Sparks
Bob Hobbs	Don Tapia
Bob Holman	Scott Tonn
Stewart Horejsi	Gregg Tryhus
Guy Inzalaco	Steve Wood
Dean Jacobson,	
Secretary	



*The Wells Fargo Arena is the home of ASU volleyball.*





Courtney Blocher



Cheryl Anglin



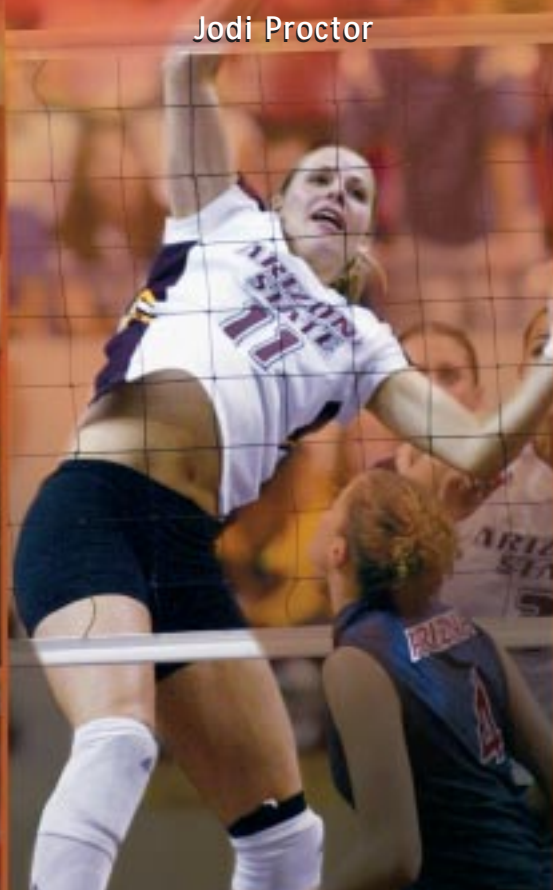
Mandy Stephens

# Sum Devil Volleyball

Senior Class of 2003



Kim Mehlhorn



Jodi Proctor



Juliana Escobar